

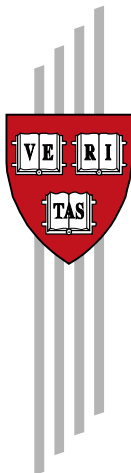
Does the Effect of Pollution on Infant Mortality Differ Between Developing and Developed Countries?

Evidence from Mexico City

Eva Arceo/Rema Hanna/Paulina Oliva

CID Working Paper No. 244
June 2012

© Copyright 2012 Author 1, Author2, Author3, and the President
and Fellows of Harvard College



Working Papers

Center for International Development
at Harvard University

**Does the Effect of Pollution on Infant Mortality
Differ Between Developing and Developed Countries?
Evidence from Mexico City**

Eva Arceo, CIDE
Rema Hanna, Harvard, NBER and BREAD
Paulina Oliva, UCSB, NBER

First Draft: June 2012

PRELIMINARY AND INCOMPLETE

Abstract

Much of what we know about the marginal effect of pollution on infant mortality is derived from developed country data. However, given the lower levels of air pollution in developed countries, these estimates may not be externally valid to the developing country context if there is a non-linear dose relationship between pollution and mortality or if the costs of avoidance behavior differs considerably between the two contexts. In this paper, we estimate the relationship between pollution and infant mortality using data from Mexico. We find that an increase of 1 parts per billion in carbon monoxide (CO) over the last week results in 0.0032 deaths per 100,000 births, while a 1 $\mu\text{g}/\text{m}^3$ increase in particulate matter (PM₁₀) results in 0.24 infant deaths per 100,000 births. Our estimates for PM₁₀ tend to be similar (or even smaller) than the U.S. estimates, while our findings on CO tend to be larger than those derived from the U.S. context. We provide suggestive evidence that a non-linearity in the relationship between CO and health explains this difference.

We thank Jon Hill and Katherine Kimble for excellent research assistance. We are grateful to David Card, Janet Currie, Olivier Deschenes, Heather Royer, Heidi Williams, Catherine Wolfram and Lucas Davis for helpful comments, as well as seminar participants at CEPR Development Meetings Pre-Conference, the ARE Berkeley Seminar, the Environment and Human Capital Conference, and the UC Santa Barbara Labor Lunch. We especially thank Marta Vicarelli for providing us with the temperature data. This project was funded in part by the Harvard Center for Population and Development Studies and UCMexus.

I. INTRODUCTION

Pollution is a grave concern in much of the developing world, with levels that are often orders of magnitude higher than in developed countries. Using comparable data, Greenstone and Hanna (2011) document air pollution levels that are five to seven times higher in India and China than in the United States. This may translate into many lost lives: The OECD estimates that almost 1.5 million individuals die from exposure to particulates each year, many more than who die from malaria or unclean water. With pollution levels predicted to rise, the OECD claims that this figure may exceed 3.5 million people per year by 2050, with most of these deaths occurring in rapidly industrializing countries, such as India and China (OECD Outlook, 2011).

Much of what we know about the causal relationship between pollution and infant health comes from developed country settings (for example, see Greenstone and Chay, 2003; Currie and Neidell, 2005).¹ However, there are two important reasons why these estimates may have limited external validity to the developing country context. First, they may be limited if there is a non-linear dose-response relationship between pollution and infant mortality. If we expect, for example, that marginal changes in pollution are more damaging at higher levels of air pollution, using developed country estimates would cause us to grossly underestimate the effect in many developing countries. However, if there is an inflection point through which pollution needs to fall beneath before health gains can be realized, using developed country estimates could alternatively lead us to overestimate the effect. Similarly, due to a host of factors (i.e. disease environments, access to health care), infant mortality rates are significantly higher in many developing countries. As such, it is possible that pollution may exert a larger effect on infants if they are already weakened by these other factors, or alternatively, it is possible that a marginal increase in pollution may be negligible if these other factors supersede the pollution effect.

Second, the effect of pollution on health may be highly dependent on behavior (for example, see Neidell and Moretti, 2011; Graff Zivin and Neidell, 2009; Deschenes, Greenstone and Shapiro, 2012). Avoidance behavior may be costlier in the developing world, given less access to health care and lower quality housing stock, which would imply that a marginal decrease in pollution may have a larger overall health impact in the developing world. However,

¹ Exceptions include Jayachandran (2006), who explores the impact of smoke from forest fires in Indonesia on infant health; Greenstone and Hanna (2011) who estimate the effect of mandated catalytic converters on infant mortality rates in India, but have a noisy estimate of the policy impact due to limited data; and Tanaka (2012), who measures the effect of more stringent environmental regulation in China.

the effect could also be smaller if, for example, individuals have permanently adapted to bad pollution by keeping infants indoors or wearing breathing masks regularly.² Given these two potential factors, applying estimates of the marginal effect of pollution that are derived from the United States to developing countries may be highly misleading for policy. Furthermore, given the theoretical ambiguity regarding the bias that these estimates would produce, it is difficult to assess the direction in which we would be wrong.

The shortage of this type of analysis for developing countries stems from two main challenges. First, data constraints tend to be more severe in developing countries. Quite frequently, disaggregated data on infant births and deaths are not accurately recorded or computerized. Even when the data are available, the validity of the data may be questionable as there is substantial selection as to which births and deaths are registered. Moreover, there are fewer stations systematically measuring pollution levels in developing countries, and so there is potentially less variation in pollution to exploit.

Second, there is a simultaneity problem in estimating the relationship between pollution and health. This problem is typically addressed by one of two methods. First, one can use a policy instrument to tease out exogenous variation in pollution. However, despite the fact that environmental regulations in developing countries often look similar to those in the United States, they are often riddled with implementation and enforcement problems that result in more limited impacts, resulting in a weak first stage. For example, Greenstone and Hanna (2011) experience this problem when using environmental regulations in India as an instrument for pollution.³ The second methodology typically used is a fixed effects model that controls for time-invariant differences across locations and overall trends (see, for example, Currie and Neidell, 2005). This type of empirical model can be challenging when using data from the developing world, as the measurement error that may arise from using sparser pollution data than in the United States may be exacerbated by the inclusion of fixed effects.⁴

In this study, we aim to address these problems and estimate the impact of pollution on infant mortality in a developing country context. To do so, we construct weekly, municipality-

² As higher pollution is more visible, avoidance behaviors may be more likely since the costs of learning about pollution levels may be lower.

³ One exception is Tanaka (2012), which studies the effect of more stringent regulation in China on infant mortality.

⁴ As Currie and Neidell (2005) discuss, measurement error has also been noted in the United States context as well. Schlenker and Reed (2011) and Knittel, Miller, and Sanders (2011) find larger impacts of pollution on health when using an instrumental variables strategy as compared to fixed effects methods using United States data, which both claim is consistent with classical measurement error being exacerbated with the fixed effects methodology.

level measures of pollution and mortality for 48 municipalities across Mexico City between the years 1997 to 2006. Mexico City is a highly relevant context in which to study this relationship. On average, it experiences both the high levels of pollution and mortality that are common in many developing countries. However, given the high variance in pollution levels, the range of pollution also encompasses a range similar to that observed in the United States. These two facts will allow us to estimate the marginal effect of pollution at a range that is typical for developing countries, and then to compare this estimate to the marginal effect at the ranges used in the previous estimates for the United States.

We first employ a fixed effects technique, controlling for time-invariant characteristics of municipalities, week fixed effects, and municipality-specific year trends. Using this method, we find no impact of pollution on mortality. However, despite access to very high quality pollution measures, station coverage is sparse: depending on the pollutant and year, our pollution measures are derived from between 10 to 26 stations. Given that fixed effects models are particularly sensitive to classical measurement error, our estimates may be severely biased downward.

Instead, we exploit the meteorological phenomenon of thermal inversions. An inversion occurs when a mass of hot air gets caught above a mass of cold air, trapping pollutants. Conditional on temperature, inversions themselves do not represent a health risk *per se* other than the accumulation of pollutants. As such, we can use the number of inversions in a given week to instrument for pollution levels that week. We find that each additional inversion leads to a 3.5 percent increase in particulate matter measuring 10 μ m or less (PM₁₀) and a 5.4 percent increase in carbon monoxide (CO), conditional on municipality fixed effects, municipality-specific time trends, polynomials in temperature and weather controls.

With the instrumental variables strategy, we find robust evidence of pollution on infant mortality. Our estimates imply that 1 μ g/m³ increase in 24-hour PM₁₀ results in 0.24 infant deaths per 100,000 births. Similarly, 1 ppb increase in the 8-hour maximum for CO results in 0.0032 per 100,000 births.⁵ We find no significant effect on neonatal deaths (children 28 days and younger). As a test of the causal pathway, we then separate deaths into those that are likely to be pollution related (i.e. respiratory and cardiovascular disease) versus those that are less

⁵ As we illustrate below, these results are robust to different definitions of mortality, different controls for seasonality, the inclusion of outliers and different weather and temperature controls.

likely to be pollution related (i.e. digestive, congenital, accidents, homicides, etc.). We find statistically and policy significant effects of pollution on both neonatal and infant deaths from respiratory and cardiovascular disease. As we would expect if we had indeed isolated the effect of pollution from other factors (i.e. income, health preferences), we find no effect of pollution on deaths from other causes.

Finally, we compare our estimates to those derived in the United States setting. Specifically, we compare our estimates to Currie and Neidell (2005) [CN], Knittel, Miller, and Sanders (2011) [KMS], Chay and Greenstone (2003) [CG], and Currie, Neidell, and Schmieder (2009) [CNS].⁶ We find larger marginal effects of CO on infant mortality than CN and CNS; we also find larger point estimates than KMS, but they do not observe a significant effect of CO on infant mortality. We provide suggestive evidence that this is driven by non-linearities in the effect of CO: constraining the Mexico City pollution data to be within the range of CO values observed in the United States results in estimates that are roughly the same magnitude as CN. For PM₁₀, our results are near identical to CG's results, despite the fact that the mean level of pollution in their setting is roughly half of that in Mexico City. This is consistent with the fact that we do not observe a non-linear effect for PM₁₀ within our sample.⁷

The paper proceeds as follows. In Section II, we describe our empirical methods and data, while we provide our findings in Section III. Section IV provides a discussion of our estimates with those from the United States context. Section V concludes.

II. EMPIRICAL METHOD, DATA, AND SUMMARY STATISTICS

In this section, we first discuss some of the existing empirical methods for estimating the relationship between air pollution and infant mortality. We then detail our empirical strategy in Section II.B. Finally, we describe the data that we collected for this project.

II.A. Existing Empirical Methodologies

Our objective is to estimate the relationship between pollution (P_{mw}) in a municipality (m) in a given week (w) and mortality per 100,000 live births (Y_{mw}), or the parameter β_1 :

⁶ Note that other papers in the US context explore the effect of pollution on child and infant health (for example, see Lleras-Muney, 2010). We only include papers that study comparable infant mortality outcomes.

⁷ Although as we discuss more in depth below, we are highly cautious about this result because we have problems of power in our first stage for PM₁₀. Thus, we only take this evidence as very suggestive.

$$\text{Equation 1: } Y_{mw} = \beta_0 + \beta_1 P_{mw} + \varepsilon_{mw}$$

where ε_{mw} captures all unobserved determinants of mortality. There are many reasons to believe the identification assumption does not hold in this case. For example, areas with low levels of pollution may be richer, and thus have lower levels of mortality regardless of pollution. One method to solve the endogeneity problem would be to estimate a fixed effects model:

$$\text{Equation 2: } Y_{mw} = \beta_0 + \beta_1 P_{mw} + \alpha_m + \delta_w + \varepsilon_{mw}$$

where α_m is a set of municipality fixed effects that control for permanent differences across municipalities, such as time-invariant socioeconomic characteristics. Similarly, δ_w is a set of week fixed effects, which controls for common factors (e.g. city-wide economic shocks) in a given week that could affect both pollution levels and infant mortality. The fixed effects model represents a substantial improvement over the standard cross-sectional regression. However, two concerns remain. First, β_1 may still be subject to bias if there are unobservable, time-varying differences across municipalities. One way to account for this is to include municipality-specific, linear time trends. However, this may not capture sharp or non-monotonic changes in omitted pollution and infant mortality determinants, such as road improvements that could result in fewer traffic jams and faster access for emergency vehicles, or similarly, protests and demonstrations that results in disrupted travel patterns. Second, classical measurement error in the pollution variable will bias $\widehat{\beta}_1$ downwards. Fixed effects estimators exacerbate measurement error, biasing $\widehat{\beta}_1$ further towards zero. As compared to developed country settings, this may be particularly problematic in developing countries, where pollution-monitoring stations are sparse: for example, as we discuss below, we exploit data from 10 to 26 stations.

II.B. Exploiting Thermal Inversions in an Instrumental Variables Framework

We consider an instrumental variables strategy, which will likely minimize bias from both endogeneity and classical measurement error. Specifically, we exploit a meteorological phenomenon: the existence of thermal inversions. Inversions are a common occurrence in many cities around the world, ranging from Mumbai, Los Angeles, San Paulo, Salt Lake City, Santiago, Vancouver, Prague, etc.⁸ Air temperature in the troposphere usually falls with altitude at about 6.5 degrees Celsius per 1,000 meters. However, sometimes there is a mass of hot air on

⁸ The great smog of 1952 in the UK was caused by an inversion episode and was blamed for upwards of 12,000 deaths (Bell and Davis, 2001). This incident sparked greater interest in environmental regulation in the UK.

top of a mass of cold air; this is called a thermal inversion. There are typically three reasons why this can occur: First, radiation inversions are generated in clear nights when the ground and the air in touch with the ground are cooled faster than higher air layers. The conditions for radiation inversions are more frequent in the winter: under clear conditions, the earth's infrared emissions warm the higher layers of air. The cold ground temperatures cool causing the air that is close to the ground to remain at a lower temperature than the air above. Second, inversions by subsidence occur from vertical air movements when a layer of cold air descends between a layer of hot air. Third, inversions can also be produced when layers of air at different temperatures move horizontally and a layer of cold air develops below a layer of hot air (Jacobson, 2002).

The thermal inversion does not represent a health risk in itself, but when it occurs in conjunction with high levels of vehicle and industrial emissions, it may result in the temporary accumulation of pollutants.⁹ Specifically, when emissions are released in the atmosphere, they rise and can get trapped in the inversion (see Figure 1). As the sun energy equates the temperatures of the cold and hot air masses, the "lid" effect disappears (the inversion "pops"), and the pollutants rise again. Inversions may have substantial effects on the concentration levels of certain types of pollutants, particularly primary pollutants (CO, particulate matter, NO, NO_x, and SO_x, VOC) that may be released in the morning rush hours when the inversions typically occur (Jacobson, 2002). Out of the primary pollutants, we would, therefore, expect the largest effects for pollutants in which vehicles comprise a large share of their emissions. For example, in Mexico City, 98 percent of CO emissions came from vehicles in 1998, and therefore, we expect that a large share is released in the morning commute hours. In contrast, we may expect weaker effects for pollutants like particulate matter, in which 36 percent is released by vehicles, or SO₂, in which only 21 percent is.

Inversions may have muted effects on secondary pollutants (O₃, NO₂, sulfuric acid), which require time to mix from the primary pollutants, and therefore, may only appear later in the day when it is likely that the inversions have already "popped" (Jacobson, 2002). Moreover, inversions may inhibit the formation of these pollutants in other ways. For example, in the particular case of O₃, given that the chemical reactions that result in O₃ require warmth and

⁹ See for example, Secretaría del Medio Ambiente del Distrito Federal, "Informe Climatológico Ambiental del Valle de México," 2005.

sunlight, the thick layers of pollution associated with thermal inversions may interfere with O₃ formation.¹⁰

We can, therefore, formally test whether inversions increase the concentrations of different types of pollutants (Equation 3) and, if so, we can use the number of thermal inversions in a given week (TI_w) to instrument for pollution in Equation 4:

$$\text{Equation 3: } P_{mw} = \pi_0 + \pi_1 TI_w + \sum \pi_{2m} w + h(W_{mw}) + \alpha_m + \sigma_y + \mu_{mw}$$

$$\text{Equation 4: } Y_{mw} = \beta_0 + \beta_1 P_{mw} + \sum \beta_{2m} w + h(W_{mw}) + \alpha_m + \sigma_y + \varepsilon_{mw}$$

Note that TI_w varies at the week level, and therefore, week fixed effects are no longer identified and errors may also be correlated within weeks.¹¹ We therefore control for municipality-specific week trends (w) and allow for errors to be clustered at the week level. We also include for municipality fixed effects (α_m) to control for time-invariant characteristics across municipalities, and year fixed effects (σ_y) to account for city-wide year trends, such as recessions.¹²

Importantly, we include a flexible set of controls for temperature and weather conditions ($h(W_{mwy})$) that includes a fourth polynomial in mean temperature, a third degree polynomial in minimum and maximum temperatures during the week, a second degree polynomial in precipitation, cloud cover and humidity measures. Controlling for temperature is important for the exclusion restriction to hold, since inversions have a clear seasonal pattern and temperature may independently affect infant mortality (Deschenes and Greenstone, 2011).¹³ Figure 2, Panel A shows the average number of thermal inversions per week for each month of the year (bars), as well as the average temperatures for each month of the year (spikes) measured by the right axis. As expected, given the conditions necessary for a radiation inversion, a large share of the inversions occurs in the winter (November-March). However, inversions also occur in months with relatively high temperatures (April, May and October), which will allow us to disentangle the effects of temperature on infant mortality from that of air pollution.

¹⁰ Ozone Formation, EPA, <http://www.epa.gov/oar/oaqps/gooduphigh/bad.html#6>

¹¹ Note that as we exploit week-to-week variation within municipalities in this setting, sorting across different municipalities due to differential pollution should not be a large concern. Moreover, Hanna and Oliva (2011) show that sorting is nonetheless not a large concern within Mexico City as very few households move across census blocks, which are an even smaller geographic unit than municipalities.

¹² As we illustrate below, our results are robust to different configurations of the control variables, such as omitting controls for minimum and maximum temperatures during the week, omitting municipality-specific time trends and including seasonal effects.

¹³ In addition, including precipitation, cloud cover and humidity is also essential as it is possible that an inversion can lead to a thunderstorm if moisture is trapped in the inversion.

Note three additional specification details. First, all regressions are clustered at the week level, which is the level of variation of our instrument. However, our estimates are robust to alternative modeling assumptions for the error term; for example, our reduced form results remain unchanged if we employ Conley standard errors to adjust for geospatial correlations (see Appendix Table 1). Second, all regressions are weighed by the number of births in the respective cohort (Appendix 1 also shows that the results are not sensitive to the weights). Third, we can also try to disentangle the effects of different pollutants on infant health by taking advantage of the fact that the inversion effect may vary based on the geographical features of a location, such as its altitude. Specifically, this will allow us to create multiple instruments for the pollution variables.

Finally, in addition to estimating the marginal effect of a change in average pollution, we explore whether there is a non-linear dose-response relationship between pollution and infant mortality. We estimate our IV model using a linear spline in pollution with a single node that roughly corresponds to the range in each pollutant in Currie and Neidell (2005). In particular, we use a cutoff of one standard deviation above the mean pollutant value in Currie and Neidell (2005) to generate the splines.¹⁴ This allows us to assess whether our results differ from previous studies in the United States due to non-linearities in the health-mortality relationship.

II.C. Data

We compiled a comprehensive dataset on pollution measures, weather conditions, and mortality for Mexico City for the years 1997-2006. Each data source is described in detail below.

Neonatal and Infant Mortality

We constructed the mortality measures from data that we obtained for the Mexico City Metropolitan Area (MCMA) from the Ministry of Health (Secretaría de Salud Pública). We utilize two sources. First, we compiled data from death certificates, including information on day of death, gender of the child, municipality of residence, age of the child at death, and cause of death. Second, to compute mortality rates, we additionally gained access to the birth certificate registry, which contains information on date of birth and municipality of residence.

¹⁴ We additionally test the robustness of the results to different definitions of the splines.

We then computed weekly, municipality-level neonatal mortality rates (those that are 28 days of age and younger) and infant mortality rates (those that are one year old and younger). To do so, for each week-municipality observation, we calculate the number of births in the last 28 days and in the last year.¹⁵ Mortality rates are then calculated by dividing the total number of deaths in each week-municipality by the total number of live births in the corresponding age group and then multiplying by 100,000. Thus, our coefficients can be interpreted as the number of deaths in a week per 100,000 children born alive in the respective age cohort.

Pollution

Pollution data are notoriously absent in many developing countries. When available, they are often only cross-sectional, or of mixed quality. In this paper, we are able to take advantage of a relatively rich, panel dataset that is available for Mexico City, namely the Automatic Network of Atmospheric Monitoring (RAMA). Measures are available for particulate matter under 10 micrometers (PM_{10}), sulfur dioxide (SO_2), carbon monoxide (CO) and ozone (O_3). These data are considered to be of high quality, and, as Davis (2008) points out, “[t]hese measures are widely used in scientific publications...” However, it is important to note that they are drawn from relatively few stations: PM_{10} is available for 10 stations from 1997 to 1999, and from 16 stations starting in 2000, SO_2 is drawn from 26 stations, CO is drawn from 24 stations and O_3 is drawn from 21 stations.

From these data, we construct weekly measures of pollution for each of the 56 municipalities in Mexico City using the inverse of the distance to nearby stations as weights (see Currie and Neidell (2005) for description of the methodology). Out of the 56 municipalities in Mexico City for which we have infant mortality data, we include the 48 that are within 15 kilometers of a station. There is a tradeoff between constraining the sample to municipalities that are even closer to at least one station for greater precision of the pollution measure and increasing the distance cutoff to include more municipalities. As shown in Appendix Table 2, our results are robust to different definitions of this cutoff.

We use the hourly measures of pollution to calculate the maximum daily 8-hour average for CO and average this over the week, the maximum daily 24-hour average for PM_{10} and

¹⁵ Since 0.03 percent of the births certificates have missing month and day of birth, we adjust weekly estimates of births by dividing un-dated births equally among all weeks of the year.

average this over the week, and then weekly averages for SO₂ and for O₃.¹⁶ All of these daily measures are then averaged over the week.

Thermal Inversions

Thermal inversions are recorded by the Meteorological Unit of the local Ministry of Environment. They conduct screenings almost every day, which consist of measuring hourly temperatures at different altitudes using an aerostatic balloon.¹⁷ The existence of an inversion is determined upon finding non-monotonic temperature gradients. Records are kept on the time and temperature of the inversion rupture, so that one can also compute the number of hours an inversion lasted, as well as the thickness of its layer. We aggregate the data to the weekly level by computing the number of thermal inversions in a given week. To test non-linear effects of pollution on infant mortality, we can also create indicator variables for 1, 2-3 and 4-7 thermal inversions per week.

Temperature and Weather

We obtained temperature and weather variables as additional controls in our specification. Hourly temperature measures are available from 24 stations in the RAMA network, and daily level measures of humidity, precipitation and cloud measures are available daily from 219 local weather stations. Using the same methodology to compute weekly, municipality-level measures of pollution, we use this information to compute the temperature and weather controls.

II.D. Data Description

We describe the data in Table 1. In Panel A and B, we provide information on neonatal mortality rates (for children that are 28 days and younger) and infant mortality rates (those that are one year and younger) respectively. In addition to the means for the weekly measures used in the regression analysis (Column (1)), we additionally include the mean across municipalities in a given year per 100,000 births for ease of comparison with the U.S. figures (Column (4)).¹⁸

¹⁶ We use these measures for ease of comparison with Currie and Neidell (2005) and Knittel et al. (2011). However, our results are robust to alternative measures of pollution.

¹⁷ Of the 3,652 days within our sample period, we have data on whether an inversion occurred for 95 percent of these days. We drop the weeks in which we are missing inversion data.

¹⁸ Note that the weekly measure for infant deaths in Column 1 appears smaller than that of neonatal mortality, despite the fact that the later also includes neonatal deaths. The difference in magnitudes is mainly due to scaling:

Over the period of study, yearly mortality rates are more than double in Mexico City than in the United States: The neonatal mortality rate is 1183, while the U.S. rate is 460. Similarly, the infant mortality rate in Mexico City was 1986, while the comparable US figures was 698.

Note that, we also provide mortality estimates, by cause of death. We can test whether the effect of pollution on mortality is driven by deaths that we expect to be related to pollution. We define this comparison in two ways. First, we can compare all internal deaths with all external deaths (i.e., accident, homicides). This is a very strict definition, in that it assumes that pollution affects all internal deaths, including for example those from digestive diseases, which may or may not be affected by pollution. Moreover, there are relatively fewer deaths from external sources (61.37 per 100,000), with relatively less variation, and so we may not capture an effect with the same sample size due to power concerns. Therefore, we also compare diseases that are *more likely* to be directly attributed to pollution (i.e., respiratory and cardiovascular disease) versus those that are *less likely* to be directly attributed to pollution (digestive, congenital, accidents, homicides, etc.).

In Panel C, we provide means for particulate matter of 10 μ m or less (PM₁₀), carbon monoxide (CO), ozone (O₃), and sulfur dioxide (SO₂), as well as summary information on inversions.¹⁹ Despite falling pollution levels in Mexico City, the average is still quite high. For example, the mean level of PM₁₀ is about 67 μ m as compared to 39.45 μ m observed in California, as documented by Currie and Neidell (2005). Inversions are fairly frequent: on average, there are 1.7 inversions in a municipality-week. Conditional on an inversion occurring that week, there is an average of 2.77 inversions in a municipality-week.

III. RESULTS

III.A. Correlations in Pollution and Health

Before we turn to the quasi-experimental approaches, we first describe the evolution of pollution and infant mortality over time. In Figure 3, we graph average weekly neonatal (Panel A) and infant mortality rates (Panel B) against each of the four air pollutants over time. Mexico City has

neonatal mortality rates are computed by dividing the number of deaths occurred in a single week within the 28 day cohort by the number of live births corresponding to that cohort. Hence, the denominator for the neonatal mortality figure is necessarily smaller than the denominator for the infant mortality figure. Column 4 shows mortality rates on a yearly basis. This column is computed by multiplying Column 1 by 4 (or 52/13) in the case of neonatal mortality and by 12 in the case of infant mortality.

¹⁹ Given the presence of outliers in the data, we trim the top and bottom 1 percent of values. The primary results remain largely unchanged if we do not trim the outliers as shown in Columns 5 and 6 of Appendix Table 4.

been successful in reducing pollution city-wide over the 1997 to 2006 time period, with all four air pollutants falling sharply over this period (Molina and Molina, 2002). As the figures illustrate, mortality rates are also falling and, in some cases, the rates closely track pollution changes.

Table 2 quantifies these patterns. Specifically, we estimate Equation 1 for neonatal mortality (Column (1)) and infant mortality (Column (2)). As the figure illustrates, we find a large, significant, positive correlation, which is robust to the inclusion of flexible controls for temperature and weather variables (Columns (3) and (4)). The magnitudes are fairly large: for example, as shown in Column 4, a one $\mu\text{g}/\text{m}^3$ increase in PM_{10} (1.5 percent increase) is associated with 0.131 more infant deaths per 100,000 births per week, a one ppb (about 0.037 percent increase) in CO is linked to 0.003 more deaths, and a one ppb increase in O_3 (a 3 percent increase) is associated with 0.171 more deaths.

III.B. First Stage Estimates

We begin by examining the relationship between the occurrence of an inversion and each of the four pollutants (PM_{10} , CO, O_3 , and SO_2), which comprises the first stage of our instrumental variables strategy. In Figure 4, we graph the average pollutant level by number of inversions. As the figure illustrates, we observe a strong, and fairly linear, relationship between the number of inversions the last week and PM_{10} and CO levels. In contrast, there does not appear to be an obvious relationship between the number of inversions and either O_3 or SO_2 .

We provide the corresponding regression analysis in Table 3. Specifically, we present coefficient estimates from Equation 3. As suggested by the figure, inversions have a large and significant effect on PM_{10} and CO. One additional inversion in the last week results in a 2 $\mu\text{g}/\text{m}^3$, or 3.4 percent, increase in PM_{10} (Column 1). Similarly, one additional inversion results in a 153 ppb, or 5.6 percent, increase in CO (Column 2). The effects on PM_{10} and CO are both significant at the 1 percent level. There are no significant effects of thermal inversions on SO_2 and O_3 (Columns 3 and 4). These overall findings are consistent with the theoretical predictions discussed in Section II.

III.C. Causal Estimates of Pollution on Infant Mortality and Health

In Columns (1) and (2) of Table 4, we provide the coefficient estimates of the effect of each pollutant on neonatal and infant mortality, respectively, from estimating Equation 2 (the fixed effects model). Note that we additionally include municipality-specific week trends in this model.²⁰ In Columns (3) and (4), we provide our IV estimates for the individual effects of PM₁₀ and CO on mortality; here, we report the coefficient estimates from Equation 4.²¹ As there is no first stage result for SO₂ or O₃, we do not estimate an IV estimate for these pollutants.

Using a fixed effects strategy, we find no observable effects of pollution on mortality (Columns (1) and (2)). As compared to the cross-sectional analysis with controls that is shown in Columns (3) and (4) in Table 2, the fixed effects estimates, for the most part, tend to be small in magnitude and much less precisely estimated. This is consistent with classical measurement error.

Instead, we turn to our instrumental variables strategy. Here, we find large effects of pollution on infant mortality, but smaller and non-significant effects on neonatal mortality. In the case of infant mortality, a one $\mu\text{g}/\text{m}^3$ increase in PM₁₀ over the week leads to 0.23 deaths per 100,000 births, while a one ppb increase in CO leads to 0.032 deaths.²² This implies that a 1 percent increase in PM₁₀ over a year leads to a 0.42 percent increase in infant mortality, while a 1 percent increase in CO results in a 0.23 percent increase. These findings are consistent with the fact that death by respiratory diseases, which are likely affected by pollution exposure, are higher share of total deaths for infants than for those under 28 days, and may reflect underlying differences in ambient air exposure (i.e. infants may be more likely to be taken outside during the day than newborns).

One concern is that models that estimate the effect of pollution on infant death within a short timeframe, such a week, overstate the effect. This bias would occur if pollution simply accelerates infant deaths by a short time period rather than causing additional deaths

²⁰ As Appendix Table 3A shows, the results do not qualitatively change if we drop the municipality week trends (Columns (1) and (2)), include fewer temperature controls (Columns (3) and (4)), or drop the week fixed effects so that the estimate is more comparable to Currie and Neidell (2005) (Columns (5) and (6)).

²¹ Appendix Table 3B explores the robustness of the IV estimates to different control variables. As shown in Columns (1) and (2), the effects on neonatal and infant mortality are qualitatively similarly if we do not include the municipality-week trends, which suggest the inversions are for the most part uncorrelated with the trends in mortality that are unrelated to pollution. Relaxing the temperature controls (Columns (3) and (4)) leads to larger estimates for infant mortality, but the effects are still not significant for neonatal mortality. Including a more flexible time trend (Columns (5) and (6)) also results in qualitatively similar results.

²² Note that Table 4 reports effects of CO in terms of neonatal/infant deaths associated with one part per billion, which corresponds to an increase in CO concentration of 0.037 percent.

(“harvesting”). We do not find evidence of this. We can see this in two ways. First, the effect on neonatal deaths is much smaller in magnitude than infant deaths. Due to the scaling, we need to multiply the infant mortality estimates to compare the neonatal and infant mortality estimates. When doing this, it becomes apparent that the effects on neonatal mortality are not only insignificant, but also 50 percent smaller in magnitude. The fact that we find smaller effects of air pollution on children below the age of 28 days suggests that air pollution is not accelerating death of already vulnerable children, but is causing death of children with otherwise long life expectancies. Second, in Appendix Table 4A and 4B, we present the results of our analysis when we aggregate the data to the month level rather than at the week level. If harvesting is an issue of concern with our estimates, we would expect smaller effects when using data aggregated at the month level. However, this is not the case.²³

It is important to note that our IV results are very robust to changes in the model specification, providing a high level of confidence in this strategy. In Appendix Table 5, we first test whether our results are driven by changes in the denominator of the left hand side variable, i.e., the number of births. This would be the case if pollution shocks have an impact in the number of live births in the current week, which are included in the denominator. We perform this check by estimating our IV model with the log of deaths as a dependent variable and the log of births as an additional control variable. The results of this specification, reported in Columns (1) and (2), can be compared with our main results divided by the average mortality rate. We find that the results of the log specification for infant mortality are slightly smaller, but not significantly different than our main estimates, and they are still significant at the 10 percent level (the effects on neonatal remains insignificant across both models). Thus, it is unlikely that the results are driven by changes in births.²⁴

Second, we explore whether the seasonality in thermal inversions is driving our results. This could be the case if our temperature and weather variables are not fully controlling for climatic differences across seasons, or if the flu or other epidemics have similar timing with

²³ To make the magnitudes of infant mortality coefficients comparable across Appendix Table 4B and our main results (Table 4), it is useful to compute the yearly mortality effects associated with both (i.e., multiplying coefficients in Table 4 (Column 2) by 52 and the coefficients in Appendix Table 4B (Column 2) by 12). The coefficients from monthly aggregated data appear about three times as large as the coefficients from weekly aggregated data. Note, however, that only the coefficients from the CO IV regression are reliable since the first stage for PM₁₀ is lost when aggregating data at such a coarse level (See Appendix Table 4A).

²⁴ Note that in Columns (3) and (4) of Appendix Table 5, we also show the estimates had we not dropped the top and bottom 1 percent of values in pollution and show that the results are not sensitive to their inclusion.

thermal inversions, but are not fully controlled for by our temperature and weather variables. We do this in several ways. First, we can control for mortality in the second largest city of Mexico, Guadalajara, which shares similar weather patterns as Mexico City, but does not experience inversions. As Appendix Figure 1 illustrates, Guadalajara also experience seasonal patterns in mortality, albeit not as pronounced as in Mexico City. Including the mortality rate in Guadalajara as a control (Columns (1) and (2) of Appendix Table 6A) does not qualitatively affect the results; the effect of CO, if anything, actually increases when we control for the mortality rate in Guadalajara. Second, we can directly include season fixed effects (Columns (3) and (4) of Appendix Table 6A). The magnitude of the results remains qualitatively unchanged. However, note that if we include both season and year fixed effects, the standard errors increase substantially even though the magnitude of the estimates remains unchanged (Columns (4) and (5)). Third, we can confirm whether the effect of pollution is similar across seasons, particularly whether it differs across the winter and summer months. Appendix Table 6B shows these results.²⁵ Note that we observe a significant first stage for both the summer and winter months.²⁶ On net, the effects on infant mortality do not appear to be significantly different across the winter and summer months.

Next, in Table 5, we replicate the IV analysis for mortality that results from different causes. This can be viewed as a placebo test: If we find that our pollution measure is resulting in deaths that are unlikely to be related to pollution, we would conclude that our instrument might be directly linked to unobserved socio-demographic determinants of mortality. We can define pollutant-related deaths in two ways. First, we compare deaths from all types of internal sources and those from purely external sources. We find no observable effect on either internal or external effects for neonatal (Columns 1 and 2). The effect of pollution on infant mortality appears to be driven by internal deaths (Column 6); there is no observable effect on external deaths for infants. However, mortality from external sources is rare compared to that from internal sources, meaning it would be more difficult to detect an effect on external deaths if there indeed is one. Moreover, it is possible that external deaths are simply accidental and/or immediate, and thus are altogether uncorrelated with income or health care quality.

²⁵ For completeness, we show two possible definitions of seasons. Specifically, we can define summer from week 13 to week 42 (Columns 1 and 2) or from week 14 to 43 (Columns 3 and 4). The results are qualitatively similar across the two definitions.

²⁶ The Angrist-Pischke F-statistics are above the Stock-Yogo 10 percent threshold for weak instruments.

Therefore, we can also classify deaths by those that are *more likely* to be attributed to pollution (i.e., respiratory and cardiovascular disease) versus those from sources that are *less likely* (digestive, congenital, accidents, homicides, etc.). This is not a perfect separation, as children who are weakened by high pollution may be more likely to pass away from other sources (such as digestive disorders) and causes of death may be imperfectly diagnosed. However, we should still expect the effect on respiratory diseases to be relatively large if pollution is driving much of the effect, and not other socio-demographic characteristics. Our results suggest that most of the deaths related to pollution are linked to respiratory and cardiovascular causes: We find no effect on non-respiratory deaths for either neonatal (Column 3) or infant (Column 7) deaths. Importantly, if we focus on deaths from respiratory and cardiovascular disease, we find large effects of pollution on both infant (Column 8) and neonatal (Column 4) deaths. The fact that we find that the effect of pollution on mortality is driven mainly by respiratory causes implies that our instrument is capturing exogenous variation in pollution, and not just trends in socioeconomic characteristics.

Finally, in all the regressions above, the effect for any individual pollutant may be capturing its own effect, as well as the effect of other pollutants. This is particularly problematic given that we have used one main instrument to identify the effect of each pollutant. Alternatively, we can include all pollutants in the same specification, so that the estimated effect of each pollutant is purged of potential bias from the others. This results in multiple endogenous variables, and therefore, we need to identify multiple instruments in order to estimate the causal effect of each pollutant, conditional on one another.

We exploit the fact that the effect of the inversions on pollution may differ based on the altitude of the municipality and the thickness of the inversion, and create three instruments: the number of inversions, the number of inversions interacted with altitude, and the thickness of inversion interacted with altitude. As Appendix Table 7 illustrates, PM_{10} concentrations are lower at higher altitudes, presumably because higher areas are likely to be above the thermal inversion layer. However, altitude does not seem to matter as much for CO concentrations, unless the thermal inversion layer is thick. Thickness of the thermal inversion induces higher concentrations of CO at higher altitudes. The Angrist-Pischke F-statistic for both estimated equations is above the Stock-Yogo 10 percent critical value for single endogenous regressors,

which suggests that our instrument combination induces at least some independent variation in both pollutants.

The IV estimates are presented in Table 6. We do not observe a significant effect of either pollutant on neonatal mortality, and the two pollutant variables are jointly insignificant Column (1)). While each pollutant is not an individually significant predictor for infant mortality, the two pollutants are jointly significant in predicting infant mortality at the 10 percent level (Column (2)).²⁷ In terms of magnitude, we find that given the overall decline in pollution in Mexico City from 1997 to 2006 (weighted by births), our estimates would predict a change in the infant mortality rate that is due to pollution of 277 births per 100,000 (Columns (3) and (4)).

III.D. Non-linearity in Pollution

One of the key ways in which the relationship between pollution on mortality may differ when estimated in data from developed and developing countries is that the relationship may be non-linear and the range of observed values may not be the same in the two settings. We thus test for this. Using information on the mean and variance from Currie and Neidell (2005), we define a spline at one standard deviation above their mean ($39.45 \mu\text{g}/\text{m}^3$ for PM_{10} , and 1998 ppb for CO).²⁸ Therefore, we are separately estimating the effect of pollution within and above the approximate range of values that they observe within their data.

Creating the splines results in two endogenous variables per regression. Therefore, we use indicator variables denoting 1, 2-3, and 4-7 thermal inversions per week as our instrument set. Results of these estimations are presented in Table 7.²⁹

²⁷ The fact that each individual coefficient is not individually significant is not surprising; pollutants tend to be highly correlated and thus in this case, this method would yield very imprecise estimates of each individual pollutant. We conducted an alternative method of testing for the joint effect of both pollutants. This method chooses the linear combination of the two pollutants that maximizes their joint variance, and, therefore, yields a single variable that captures the maximum amount of information from the two pollutants. We then use thermal inversion as an instrument for the pollution index. This method has a large benefit in that it utilizes more information from the data, but the drawback is that the index assumes a very specific functional form for the relationship between the pollution variables. Using this method, we find that a one standard deviation of the pollutant index leads to a 7.3 percent increase in the infant mortality rate. Given that pollution, measured by our index, fell by roughly two standard deviations during the period of analysis in Mexico City, we calculate that 731.5 infant lives per year were saved by the regulatory efforts responsible for PM_{10} and CO reductions. Importantly, while each coefficient is not individually significant, the total deaths predicted by the estimates from the multivariate model is approximately the same ($-198.5 - 532.9 = -731.4$) as the value predicted from the index despite the fact that both models exploit different variation in pollution.

²⁸ For PM_{10} , 35 percent of the observations fall below this threshold. For CO, 73 percent do so.

²⁹ We also tried instrumenting the pollution spline with a broader set of instruments that included the interactions between the indicator variables and thermal inversion intensifiers such as altitude and thickness. Results were

We are unable to identify non-linearities in PM_{10} (Panel A). However, this should be viewed with caution: the Angrist-Pischke F-statistics of the first stages for each of the two PM_{10} spline variables fall below the Stock-Yogo critical value for a single endogenous regressor. With that caveat in mind, our results suggest little difference in the marginal effect of PM_{10} above and below the $54.20 \mu g/m^3$ threshold on infant mortality (Column 2).³⁰

We find suggestive evidence of non-linearities in the CO effect (Table 7, Panel B). Importantly, the Angrist-Pischke F-statistics suggest we can separately identify variation in CO above and beyond the 3167 ppb threshold by breaking thermal inversions into indicator variables denoting 1, 2-3 and 4-7 inversions per week. We then find that the marginal effect of CO is close to zero (lower than 0.0001) when CO concentrations are below 3,167 ppb, and 0.0082 when concentrations are above this threshold (significant at the 10 percent level). However, we cannot reject that the coefficients are the same at conventional levels (the p-value for the test of equality of the slopes is 0.263).

IV. DISCUSSION

One of the main goals of this paper is to better understand whether pollution estimates derived from the United States context are externally valid to the developing world. If we believe that there is a non-linearity in the relationship between pollution and infant mortality, or that the costs of avoidance behaviors differs between the two settings then estimates derived from U.S. settings may not be valid in conducting cost-benefit analysis of environmental regulations in the developing world. As we discussed earlier, the direction of the bias is ambiguous, and therefore, it is hard to benchmark whether we would be over- or under- estimating the benefits.

Thus, we compare our estimates to those from Currie and Neidell (2005) (CN), Currie, Neidell, and Schmieder (2009) (CNS), Chay and Greenstone (2003) (CG), and Knittel, Miller and Sanders (2011) (KMS) in Table 8. Panel A reports our estimates, while Panel B provides the comparable results for the papers in the United States setting. For ease of interpretation, we provide the mean level of infant mortality (Column (1)), the mean value of each pollutant

comparable, and Angrist-Pischke F-Statistics for the first stage equations were comparable. In addition, we explored modeling non-linearities with a quadratic function. This functional form assumption resulted in small and non-significant coefficients.

³⁰ Our results are robust to different definitions of the spline. For example, the marginal effect of CO above 1.5 standard deviations from the Currie and Neidell (2005) mean is 0.0105 and significant at the 10 percent level. The marginal effect below this threshold is 0.0008 and non-significant. PM_{10} results using the 1.5 standard deviation threshold are very similar in magnitude and significance to results using the 1 standard deviation threshold.

(Columns (2) and (5)), the point estimates (Columns (3) and (6)), and the elasticity (Columns (4) and (7)). Note several features regarding the table. First, we use the estimates from the single pollutant models because our subset of pollutants differs from these papers. Even though the models are not fully comparable, we replicate this table using the multiple pollutant models in Appendix Table 8 for completeness. Second, note that CG study total suspended particulates (TSP) and not PM_{10} . For comparability to our estimates, we follow KMS and convert the TSP estimates using the following formula: $PM_{10} = 0.55 \text{ TSP}$. Third, CG and KMS study internal deaths rather than all deaths, so we additionally report the estimates for internal deaths for our sample. Finally, we put all estimates at the year level for ease of comparison.

We find that a 1 ppm increase of CO over a year leads to 166.4 infant deaths per 100,000 births (Panel A). This implies that a 1 percent increase in CO over the year leads to a 0.23 percent increase in the infant mortality rate. We find a much larger effect on the infant mortality rate than either CN, CNS, or KMS (Column 3). The estimated elasticity using the Mexico City data is larger than CN, who find an elasticity of 0.084, or CNS, who find an elasticity of 0.04. Our estimates are larger, but not qualitatively different than KMS (0.146); however, it is important to note that the KMS cannot statistically distinguish their estimate from zero. Overall, while we are cautious about our non-linear estimates, they do suggest that the difference in our estimates with CN may be driven by non-linearities in CO. For values of pollution within the range of CN, we find point estimates that are closer to their overall estimates; specifically, we find that a 1 ppm increase in CO per year leads to 5.2 deaths per 100,000 births.

While we again point out that we are cautious about our non-linear estimation, they suggest that the effect of particulates is linear. Thus, we expect that our estimates for PM_{10} should be similar to those from the United States. Despite the fact that the overall level of particulates is roughly half (66.94 in Mexico City versus 35.33 in the United States), both our point estimates for internal deaths and elasticity for PM_{10} are fairly similar to CG (Columns (6) and (7)). However, our estimates are much smaller than KMS, who find that a one unit increase in PM_{10} in the year leads to 17.68 deaths per 100,000 births, or that a 1 percent increase in PM_{10} results in a 1.82 percent increase in the infant mortality rate.

V. CONCLUSION

There is a growing concern about the effects of pollution on health in the developing world. Especially in their urban areas, high population densities and low quality health services are colliding with high levels in harmful pollutant concentrations. This paper sheds light on the importance of air quality improvements in the effort to curtail mortality rates.

Using a novel instrumental variables strategy, we find statistically significant effects of pollution on infant mortality in Mexico City. Our estimates imply that a 1 ppb increase in CO over a week leads to a 0.0032 per 100,000 births increase in the infant mortality rate, while a 1 $\mu\text{g}/\text{m}^3$ increase in PM_{10} leads to a 0.24 per 100,000 births increase in their mortality rate. This implies that a 1 percent increase in PM_{10} over a year leads to a 0.42 percent increase in infant mortality, while a 1 percent increase in CO results in a 0.23 percent increase. Our results on CO are generally larger than those estimated with data from the United States, while we find comparable results for PM_{10} despite the fact that pollution levels are more than double in Mexico City. This is consistent with our suggestive evidence of a non-linear relationship between CO and infant mortality, and a linear relationship between PM_{10} and mortality. Thus, our findings suggest that using U.S. data to estimate the benefits from cleaner air in the developing world may be biased for pollutants that exhibit a non-linear relationship between pollution and mortality.

WORKS CITED

- Bell, M.L., and D.L. Davis, "Reassessment of the Lethal London Fog of 1952: Novel Indicators of Acute and Chronic Consequences of Acute Exposure to Air Pollution," *Environmental Health Perspectives*, 109(2001), 389–394.
- Chay, Kenneth, and Michael Greenstone, "The Impact of Air Pollution on Infant Mortality: Evidence from Geographic Variation in Pollution Shocks Induced by a Recession," *Quarterly Journal of Economics*, 118(2003), 1121–1167.
- Currie, Janet, and Matthew Neidell, "Air Pollution and Infant Health: What Can We Learn from California's Recent Experience?" *Quarterly Journal of Economics*, 120(2005), 1003–1030.
- Currie, Janet, Matthew Neidell, and Johannes Schmieder, "Air Pollution and Infant Health: Lessons from New Jersey," *Journal of Health Economics*, 28 (2009), 688 – 703.
- Davis, Lucas W., "The Effect of Driving Restrictions on Air Quality in Mexico City," *Journal of Political Economy*, 116(2008), 38–81.
- Deschenes, Olivier, Michael Greenstone, and Joseph Shapiro, "Defending Against Environmental Insults: Drugs, Emergencies, Mortality and the NOx Budget Program Emissions Market," Working Paper, 2012.
- González Calderón, Martha Hilda et al., "Informe Climatológico Ambiental del Valle de México," *Secretaría del Medio Ambiente*, 2005.
- Greenstone, Michael, and Rema Hanna, "Environmental Regulations, Air and Water Pollution and Infant Mortality in India," NBER Working Paper No. 17210, 2011.
- Hanna, Rema and Paulina Oliva, "The Effect of Pollution on Labor Supply: Evidence from a Natural Experiment in Mexico City," NBER Working Paper No. 17302, 2012.
- Jacobson, M., *Atmospheric Pollution. History, Science, and Regulation*, 1st ed. (Cambridge, UK: Cambridge University Press, 2002).
- Jayachandran, Seema, "Air Quality and Early-Life Mortality during Indonesia's Massive Wildfires in 1997," *Journal of Human Resources*, 44(2009), 916–954.
- Knittel, Christopher, Douglas L. Miller, and Nicholas J. Sanders, "Caution, Drivers! Children Present: Traffic, Pollution, and Infant Health," National Bureau of Economic Research Working Paper No. 17222, 2011.
- Lleras-Muney, Adriana, "The Needs of the Army: Using Compulsory Relocation in the Military to Estimate the Effect of Environmental Pollutants on Children's Health," *Journal of Human Resources*, 35 (2010), 549–590.

Molina, Luisa T., and Mario J. Molina. Air Quality in the Mexico Megacity: An Integrated Assessment. Dordrecht: Kluwer Academic Publishers, 2001.

Moretti, Enrico, and Matthew Neidell, “Pollution, Health, and Avoidance Behavior: Evidence from the Ports of Los Angeles,” *Journal of Human Resources*, 46(2011), 154–75.

OECD, “OECD Environmental Outlook to 2050: The Consequences of Inaction,” *Publications de l'OCDE*, 2012.

Schlenker, Wolfram, and W. Reed Walker, “Airports, Air Pollution, and Contemporaneous Health,” National Bureau of Economic Research Working paper No. 17684, 2011.

Tanaka, Shinsuke, “Environmental Regulations on Air Pollution in China and Their Impact on Infant Mortality,” Working Paper, 2012.

Zivin, Joshua Graff and Matthew Neidell, “Days of haze: Environmental Information Disclosure and Intertemporal Avoidance Behavior,” *Journal of Environmental Economics and Management*, 58(2009), 119-128.

Table 1: Sample Statistics

	Mean of deaths in a week/municipality per 100,000 births	Standard Deviation	Observations	Mean of deaths in a year/municipality per 100,000 births
	(1)	(2)	(3)	(4)
<i>Panel A: Neonatal Mortality Rates (28 Days and Younger)</i>				
All Causes	295.83	520.49	24691	1183.34
Non-External Causes	287.73	513.74	24691	1150.93
External Causes	3.27	49.09	24691	13.07
Respiratory Causes	7.85	96.17	24691	31.39
Non-Respiratory Causes	283.15	507.73	24691	1132.61
<i>Panel B: Infant Mortality Rates (One Year and Younger)</i>				
All Causes	38.21	56.93	24691	1986.82
Non-External Causes	36.52	55.14	24691	1898.85
External Causes	1.18	9.61	24691	61.37
Respiratory Causes	6.91	29.35	24691	359.14
Non-Respiratory Causes	30.79	46.65	24691	1601.08
<i>Panel C: Pollution and Thermal Inversions</i>				
Particulate Matter 24hour PM ₁₀	66.94	23.85	18017	
Carbon Monoxide 8hour avg (CO)	2707.56	797.70	18167	
Sulfur Dioxide avg (SO ₂)	13.30	5.21	18173	
Ozone avg (O ₃)	32.33	7.47	18167	
Number of Inversions in a week	1.68	1.88	18538	
Number of Inversions in a week, conditional on an inversion	2.77	1.68	11257	

Notes: This table provides descriptive statistics for the key variables in the regression analysis. Panel A provides information on neonatal mortality, while Panel B provides information on infant mortality. Panel C reports information on each pollutant and the thermal inversions. External cause is defined as deaths from accidents and homicides; internal cause encompasses all causes not including accidents or homicides. Respiratory Causes (RC) includes respiratory and cardiovascular disease, while non-respiratory includes digestive, congenital, accidents, homicides, etc. Mortality data comes from death certificates and was provided by Secretaría de Salud Pública. Pollution data comes from the Sistema de Monitoreo Atmosferico de la Ciudad de Mexico (www.sma.df.gob.mx). Inversion data was provided by the Meteorological Unit at the Secretaría de Medio Ambiente.

Table 2: Correlation Between Pollution and Mortality

	<i>Bivariate Regressions</i>		<i>Weather Controls</i>	
	Neonatal	Infant	Neonatal	Infant
	(1)	(2)	(3)	(4)
Particulate Matter avg (PM ₁₀)	0.637*** (0.130)	0.136*** (0.019)	0.901*** (0.167)	0.131*** (0.020)
Carbon Monoxide 8hr avg. (CO)	0.022*** (0.003)	0.005*** (0.000)	0.023*** (0.004)	0.003*** (0.000)
Sulfur Dioxide avg (SO ₂)	0.823 (0.553)	0.454*** (0.072)	1.141** (0.558)	0.064 (0.069)
Ozone avg (O ₃)	1.540*** (0.350)	-0.085* (0.051)	1.651*** (0.408)	0.171*** (0.053)

Notes: Each cell in this table provides estimates from a separate linear regression of each pollutant on the mortality outcome listed in the column. All regressions are estimated using OLS, with standard errors clustered at the week level. The weather controls that are included in the specifications in Columns (3) and (4) are a fourth degree polynomial in average temperature during the week, a third degree polynomial in maximum and minimum temperatures during the week, a second degree polynomial in precipitation, cloud and humidity measures. The observations for each pollutant are as follows: PM₁₀: 18,040; SO₂: 18,173; CO: 18,167; O₃: 18,167. Statistical significance is denoted by: *** p<0.01, ** p<0.05, * p<0.10.

Table 3: The Effect of Thermal Inversions on Pollution (First Stage)

	PM ₁₀	CO 8hr	SO ₂	O ₃
	(1)	(2)	(3)	(4)
Inversions	2.007*** (0.383)	153.053*** (14.186)	-0.210 (0.127)	0.181 (0.155)
Mean of Outcome Variable	57.67	2707.56	13.30	32.33
Year Fixed Effects	X	X	X	X
Municipality Fixed Effects	X	X	X	X
Weather Controls	X	X	X	X
Municipality-Week Trends	X	X	X	X
N	18,040	18,167	18,173	18,167

Notes: This table provides the coefficient estimates of the effect of the number of thermal inversions per week on pollution concentrations, controlling for municipality fixed effects, year fixed effects, municipality-specific week trends, a fourth degree polynomial in average temperature during the week, a third degree polynomial in maximum and minimum temperatures during the week, a second degree polynomial in precipitation, and cloud and humidity measures. Standard errors (listed below each estimate in parenthesis) are clustered at the week level. Statistical significance is denoted by: *** p<0.01, ** p<0.05, * p<0.10.

Table 4: The Effect of Pollution on Infant Mortality

	<i>Fixed Effects</i>		<i>Instrumental Variables</i>	
	Neonatal (1)	Infant (2)	Neonatal (3)	Infant (4)
Particulate Matter 24hr avg (PM ₁₀) in µg/m ³	0.1670 (0.2706)	0.0237 (0.0272)	0.4486 (0.9607)	0.2369* (0.1216)
Carbon Monoxide 8hr avg. (CO) in parts per billion (ppb)	0.0085 (0.0097)	-0.0006 (0.0011)	0.0068 (0.0133)	0.0032** (0.0014)
Sulfur Dioxide avg (SO ₂) in parts per billion (ppb)	1.4325 (1.2619)	0.1034 (0.1273)		
Ozone avg (O ₃) in parts per billion (ppb)	1.0400 (1.1511)	0.1379 (0.1147)		
Mean of Outcome Variables	295.83	38.21	295.83	38.21
Instrument: Inversions			X	X
Week Fixed Effects	X	X		
Year Fixed Effects			X	X
Municipality Fixed Effects	X	X	X	X
Weather Controls	X	X	X	X
Municipality-Week Trends	X	X	X	X

Notes: This table presents Fixed Effects and Instrumental Variable estimates of the effect of pollution on infant mortality. Each coefficient corresponds to a separate regression. The fixed effects estimation, reported in Columns (1) and (2), includes week fixed effects, municipality fixed effects, municipality-specific week trends and weather controls. In the Instrumental Variables estimation, presented in Columns (3) and (4), the number of thermal inversions per week is the excluded instrument; this model includes year fixed effects, municipality fixed effects, municipality-specific week trends and weather controls. Weather controls are a fourth degree polynomial in average temperature during the week, a third degree polynomial in maximum and minimum temperatures during the week, a second degree polynomial in precipitation, and cloud and humidity measures. Standard errors (listed below each estimate in parenthesis) are clustered at the week level. Statistical significance is denoted by: *** p<0.01, ** p<0.05, * p<0.10.

Table 5: IV Effect of Pollution on Mortality, by Cause of Death

	<i>Neonatal</i>				<i>Infant</i>			
	External (1)	Internal (2)	Non-RC (3)	RC (4)	External (5)	Internal (6)	Non-RC (7)	RC (8)
Particulate Matter 24hr avg (PM ₁₀)	-0.0198 (0.0719)	0.0173 (0.6736)	-0.3196 (0.6604)	0.3170*** (0.1202)	0.0164 (0.0129)	0.1773* (0.0964)	0.0747 (0.0693)	0.1189*** (0.0455)
Carbon Monoxide 8hr avg (CO)	-0.0004 (0.0010)	0.0005 (0.0096)	-0.0047 (0.0094)	0.0048*** (0.0015)	0.0002 (0.0002)	0.0024** (0.0011)	0.0009 (0.0009)	0.0017*** (0.0005)
Mean of Outcome Variable	3.27	287.73	283.15	7.85	1.18	36.52	30.79	6.91

Notes: This table presents the coefficient estimates from the IV estimation of each pollutant on mortality, by cause of death. Each coefficient corresponds to a separate regression. External cause is defined as deaths from accidents and homicides; internal cause encompasses all causes not including accidents or homicides. Respiratory Causes (RC) includes respiratory and cardiovascular disease, while non-respiratory (Non-RC) includes digestive, congenital, accidents, homicides, etc. All regressions control for municipality and year fixed effects, municipality-week trends, a fourth degree polynomial in average temperature during the week, a third degree polynomial in maximum and minimum temperatures during the week, a second degree polynomial in precipitation, and cloud and humidity measures. The number of thermal inversions per week is the excluded instrument. Standard errors (listed below each estimate in parenthesis) are clustered at the week level. Statistical significance is denoted by: *** p<0.01, ** p<0.05, * p<0.10.

Table 6: Multiple Pollutant Models

	Neonatal	Infant	Change in Pollution between 1997 and 2006	Change in infant death rate per year between 1997 and 2006
	(1)	(2)	(3)	(4)
Particulate Matter 24 hr avg (PM ₁₀)	-1.6329 (2.2139)	0.0696 (0.2105)	-21.87	-79.2
Carbon Monoxide 8hr avg (CO)	0.0293 (0.0324)	0.0024 (0.0032)	-1581.73	-197.4
Chi2 Stat Joint Significance Test	0.872	5.600		-276.6
p-value	0.647	0.0608		

Notes: Each column in this table presents the results of a single specification that includes CO and PM₁₀ simultaneously. We present the results of an IV estimation of the multivariate pollution model, where inversions, inversions \times altitude, and inversions \times thickness are instruments for CO and PM₁₀ (the first stage is reported in Appendix Table 7). Coefficients can be interpreted as the effect of each pollutant, conditional on the other pollutant. All regressions control for municipality and year fixed effects, municipality-week trends, a fourth degree polynomial in average temperature during the week, a third degree polynomial in maximum and minimum temperatures during the week, a second degree polynomial in precipitation, and cloud and humidity measures. Statistical significance is denoted by: *** p<0.01, ** p<0.05, * p<0.10. For ease of interpretation, in Columns (3) and (4), we calculate the change in infant deaths per year that can be attributed to the change in pollution in Mexico City between 1997 and 2006 (assuming 282,000 births per year).

Table 7: Non-Linearities

	Neonatal (1)	Infant (2)
<i>Panel A: Linear Spline in PM₁₀</i>		
PM ₁₀ max 24hr between 0 and 54.203 and ug/m ³	-0.2047 (2.7675)	0.2171 (0.3297)
PM ₁₀ max 24hr between 54.203 and 300 ug/m ³	1.5173 (1.1804)	0.3219** (0.1449)
Angrist-Pischke F-statistic, First Stage 1	7.247	7.346
Angrist-Pischke F-statistic, First Stage 2	9.906	0.001
Stock-Yogo weak ID critical value for single endogenous regressor	8.68	8.68
Equal Slopes F (Chi-squared) Statistic	0.365	0.0883
p-value	0.546	0.766
<i>Panel B: Linear Spline in CO</i>		
CO 8hr avg. between 0 and 3167 ppb	-0.0159 (0.0305)	0.0001 (0.0032)
CO 8hr avg. higher than 3167 ppb	0.0558 (0.0422)	0.0082* (0.0047)
Angrist-Pischke F-statistic, First Stage 1	12.17	14.34
Angrist-Pischke F-statistic, First Stage 2	14.09	11.58
Stock-Yogo weak ID critical value for single endogenous regressor	8.68	8.68
Equal Slopes F (Chi-squared) Statistic	1.152	1.255
p-value	0.283	0.263

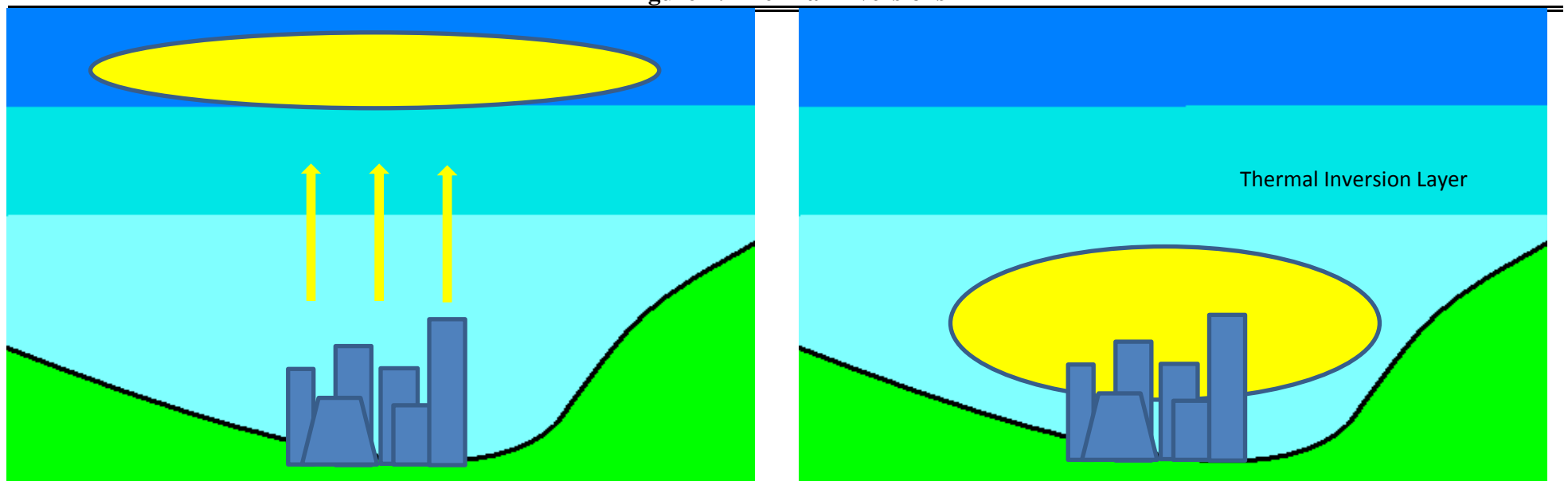
Notes: In this table, we explore whether there is a non-linearity in the dose-response relationship between pollution and mortality. Each column within each panel corresponds to a separate regression. We include a linear spline in both pollutants to capture the effect of pollution at levels within the range of California's pollution levels in the period used for Currie and Neidell's (2005) study and the effect at the higher pollution levels observed in many developing countries. Regressions are using 2SLS and include all controls as listed in Table 4. The instrument set consists of three indicator variables denoting one thermal inversion, two to three thermal inversions and four to seven thermal inversions during the week. For ease of interpretation, we include a test for equal slopes to test whether the effect of pollution on mortality differs at low versus high levels. We also report the Angrist-Pischke F-statistic to assess the strength of each of the two first stage equations in the model. These statistics should be above the Stock-Yogo critical value for a single endogenous regressor reported below them in order to rule out more than 10% bias due to weak instruments. Standard errors (listed below each estimate in parenthesis) are clustered at the week level. Statistical significance is denoted by: *** p<0.01, ** p<0.05, * p<0.10.

Table 8: Comparison with Literature in United States Setting (Sample for 1 year olds)

	Infant Mortality Rate (1)	CO			Particulate Matter		
		Effect Size			Effect Size		
		Mean Level (2)	(Year) (3)	Elasticity (4)	Mean Level (5)	(Year) (6)	Elasticity (7)
Panel A: Mexico City Data							
Infant Mortality	1986.82	2.71	166.4**	0.227	66.94	12.3188*	0.415
Infant Mortality-Internal	1898.85	2.71	124.8**	0.178	66.94	9.2196*	0.325
Panel B: Estimates from United States Setting							
Currie and Neidell (2005)	391	2.00	16.501**	0.084	39.45	0.013	0.001
Currie, Neidell, and Schmieder (2009)	688	1.58	17.6***	0.040	29.60	-0.189	-0.008
Chay and Greenstone (2003)	1179				35.33	9.47**	0.284
Knittel, Miller, and Sanders (2011)	280	1.01	40.56	0.146	28.94	17.68**	1.827

Notes: In this table, we compare our primary estimates with estimates derived from the United States context. We convert Chay and Greenstone from total suspended particulars to particulate matter for ease of comparison. We also provide the elasticity of the infant mortality rate to pollution (Columns 4 and 7). Given that Currie, Neidell, and Schmieder (2009) does not have a directly comparable group, we report their estimates for the 0-2 week age group.

Figure 1: Thermal Inversions

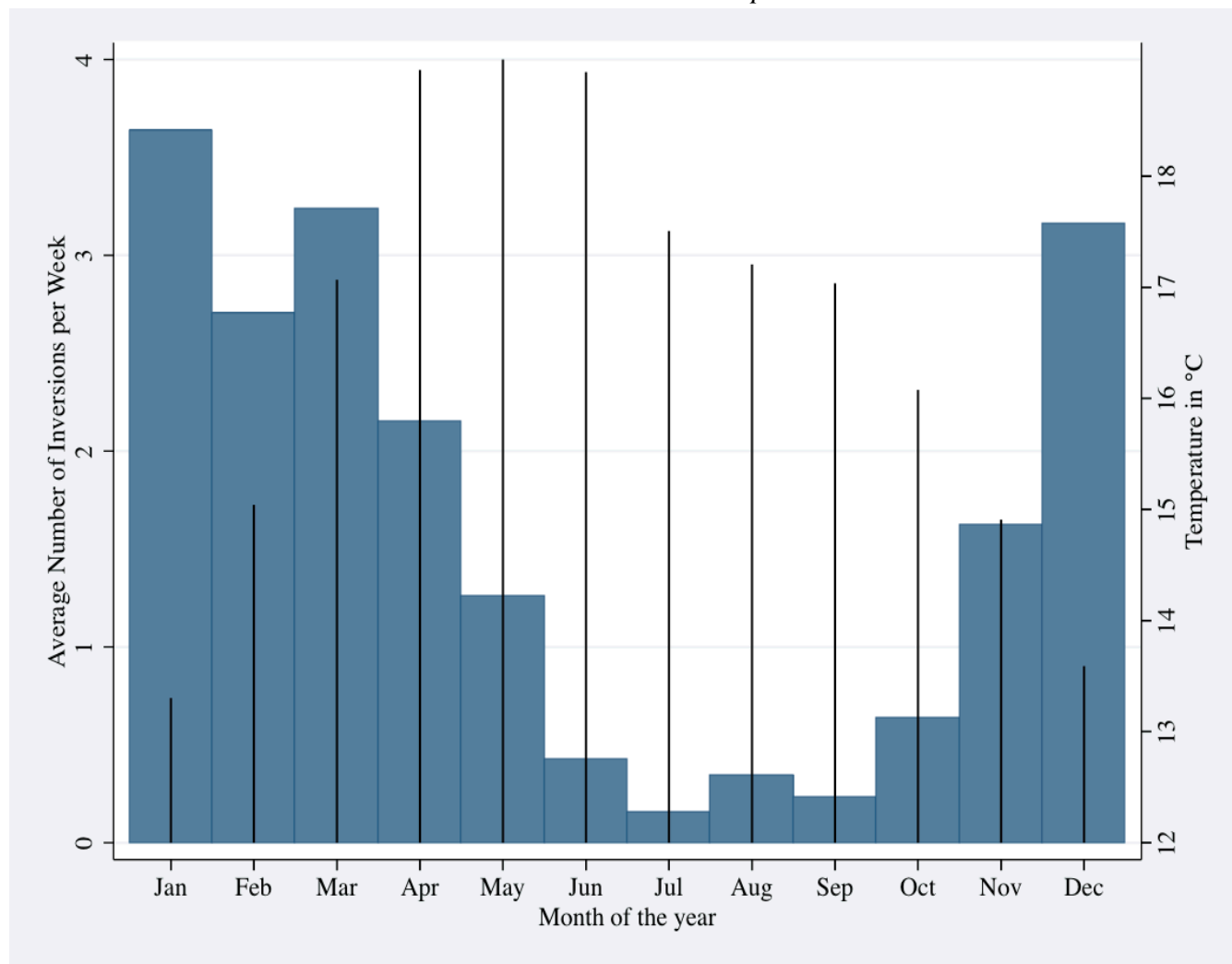


Panel A: Without Inversions, Pollutants Rise and Disburse

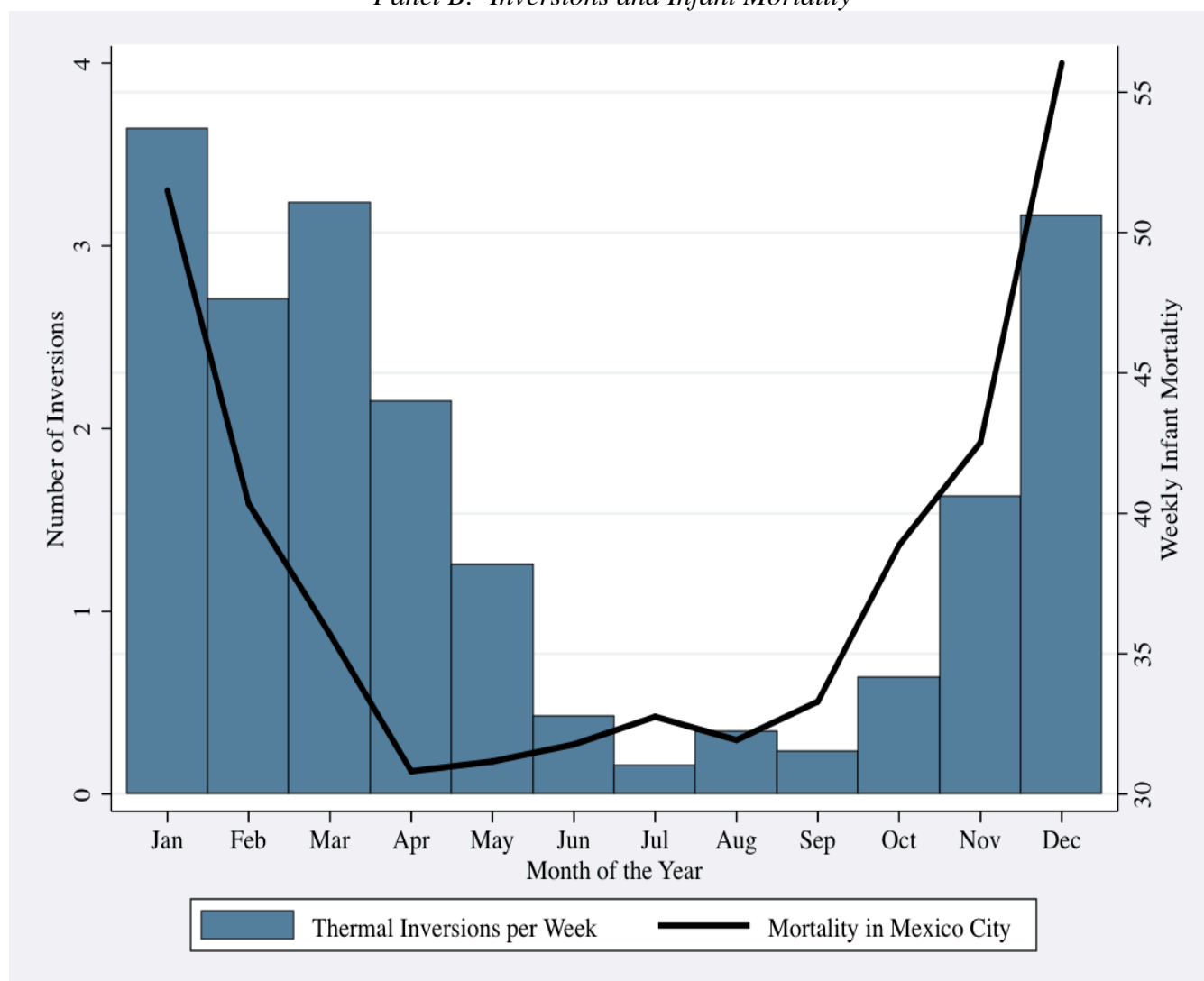
Panel B: Pollutants Are Trapped Beneath the Inversion Layer

Figure 2: Thermal Inversions, Temperatures and Infant Mortality, by Month of the Year

Panel A: Inversions and Temperature



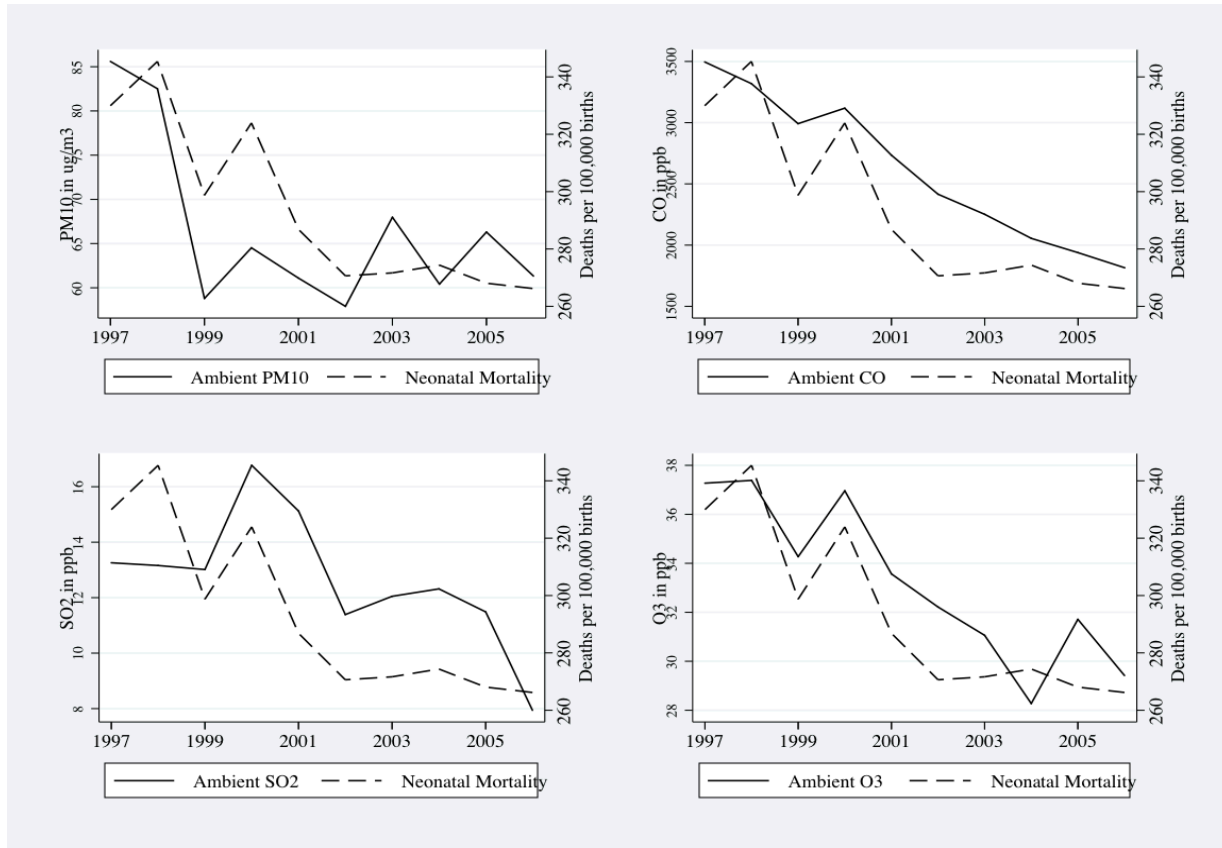
Panel B: Inversions and Infant Mortality



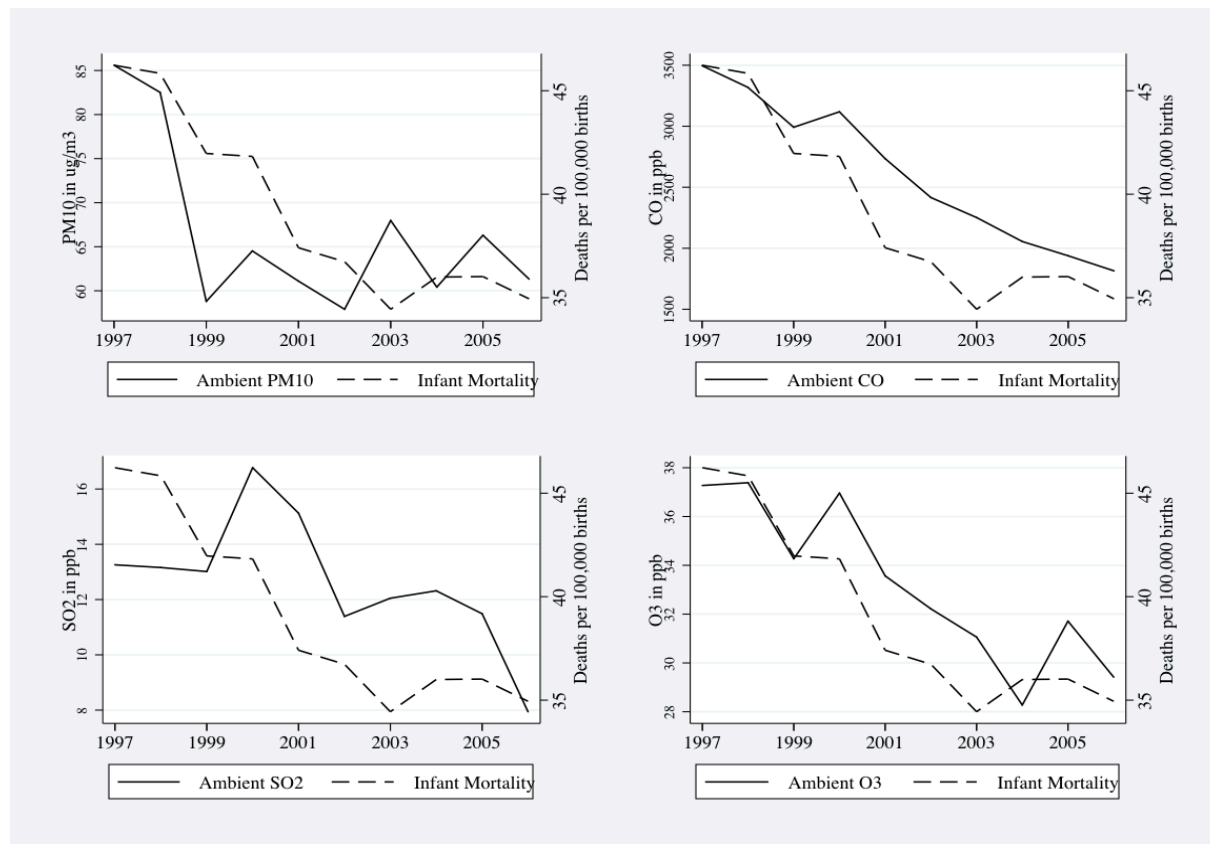
Notes: Panel A of this figure compares the average number of inversions per week (bars) with the monthly average temperature in Celsius (spikes) for each month of the year. Panel B compares the average number of inversions per week (bars) against the infant mortality rate in Mexico City (line) for each month of the year.

Figure 3: Mortality and Pollution Trends in MCMA

Panel A: Pollution and Neonatal Mortality

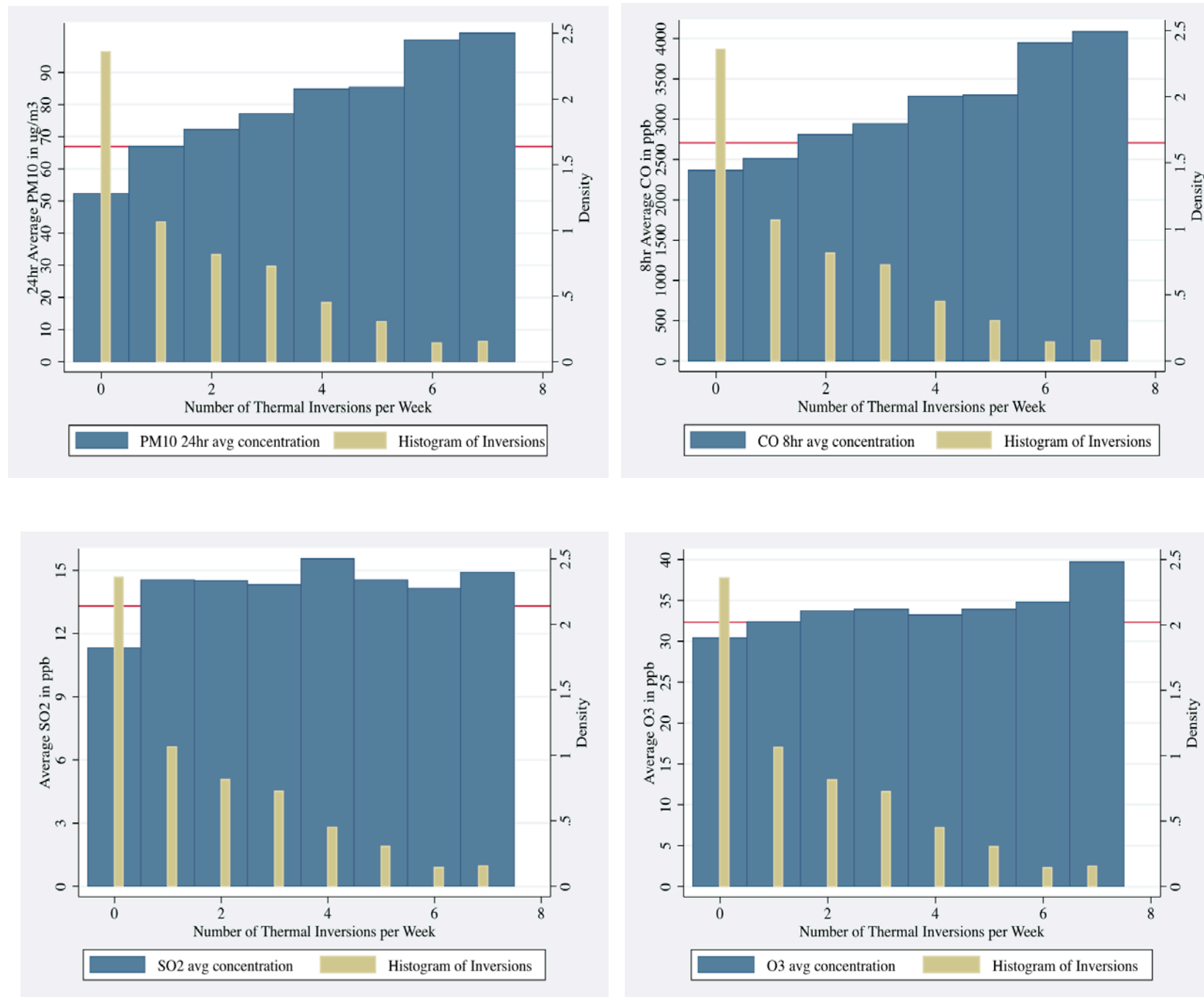


Panel B: Pollution and Infant Mortality



Notes: This figure plots the average annual pollution concentrations over time for the maximum daily 24-hour average of PM₁₀, the maximum daily 8-hour average of CO, the average concentration of SO₂ and the average concentration of O₃ (solid lines). It also plots average weekly neonatal (Panel A) and infant mortality rates (Panel B) for Mexico City (dashed lines).

Figure 4: The Relationship Between the Number of Thermal Inversion Per Week and Pollution



Notes: This figure plots average pollutant concentrations (maximum daily 24-hour average of PM_{10} , the maximum daily 8-hour average of CO, the average concentration of SO_2 and the average concentration of O_3) by the number of thermal inversions per week (thick bars) and frequency of thermal inversions per week (thin bars). The horizontal line corresponds to the average concentration of the corresponding pollutant in the period of study.

Appendix Table 1: Exploring the Assumptions on Statistical Inference (Reduced Form Analysis)

	<i>Main Specification</i> <i>(Comparable to Table 4)</i>		<i>No Weighing for Births</i>		<i>Conley Standard Errors</i>	
	Neonatal (1)	Infant (2)	Neonatal (3)	Infant (4)	Neonatal (5)	Infant (6)
Thermal Inversions	0.9783 (1.9937)	0.5084** (0.2177)	0.9223 (3.2166)	0.7828** (0.3952)	0.7247 (2.9374)	0.7502** (0.3300)
Weighted by Number of Births	X	X				
Clustered by week	X	X	X	X		
Spatially Correlated Errors					X	X
Year FE	X	X	X	X	X	X
Municipality FE	X	X	X	X	X	X
Weather Controls	X	X	X	X	X	X
Municipality Week Trends	X	X	X	X	X	X

Notes: This table compares our results under different models for the variance-covariance matrix. We present all results as reduced form regressions here to facilitate the use of Conley Standard Errors. Columns (1) and (2) show our reduced form results corresponding to our main specification. We use the same control variables as reported in the IV specification in Table 4. Columns (3) and (4) show the results without weighting each observation by the number of births. Finally, Columns (5) and (6) show the reduced form results when we use Conley standard errors to account for spatial correlations rather than clustering at the week level.

Appendix Table 2: Alternative Thresholds for Distance of Furthest Pollution Station

	<i>Infant Mortality</i>			
	<i>Fixed Effects</i>		<i>Instrumental Variables</i>	
	10km radius (1)	8km radius (2)	10 km radius (3)	8km radius (4)
Particulate Matter 24 hr Avg (PM ₁₀)	0.0402* (0.0217)	0.0232 (0.0233)	0.1973* (0.1148)	0.1705 (0.1251)
Carbon Monoxide 8 hr Avg (CO)	-0.000263 (0.000777)	-0.000184 (0.000078)	0.0029** (0.0014)	0.0022 (0.0014)
Sulfur Dioxide (SO ₂)	-0.0848 (0.0979)	-0.0323 (0.0988)		
Ozone (O ₃)	0.0597 (0.0800)	0.0308 (0.0860)		
Observations	12,478	9,264	12,478	9,264

Notes: In this table, we vary the maximum distance from stations to municipality centroids in the distance-weighted averages for municipality-level pollution. Each coefficient and corresponding standard error corresponds to a separate regression. For conciseness, we only report results on infant mortality. Columns (1) and (3) show results comparable to Columns (2) and (4) of Table 4, but with a maximum of 10 km distance between a station and a municipality centroid (rather than 15km). This more restrictive method of calculating pollution results in more precise measures of pollution at the municipality level (less measurement error). However, note that this results in a smaller number of observations, since we lose municipality-week observations for which no station is available within a 10 km radius. Similarly, Columns (2) and (4) are comparable to Columns (2) and (4) of Table 4, but with a maximum distance of 8 km between a station and a municipality centroid. The number of observations using this restriction drops even further.

Appendix Table 3A: Alternative Controls in Fixed Effects Specification

	<i>No Municipality Trends</i>		<i>No Min/Max Temp</i>		<i>No Week FE (C&N)</i>	
	Neonatal	Infant	Neonatal	Infant	Neonatal	Infant
	(1)	(2)	(3)	(4)	(5)	(6)
Particulate Matter 24hr avg (PM ₁₀)	0.4138*	0.0291	0.1497	0.0214	0.0166	-0.0102
	(0.2436)	(0.0252)	(0.2695)	(0.0270)	(0.2613)	(0.0296)
Carbon Monoxide 8 hr avg (CO)	0.0058	-0.0010	0.0082	-0.0008	0.0003	0.0001
	(0.0097)	(0.0011)	(0.0097)	(0.0011)	(0.0082)	(0.0008)
Sulfur Dioxide (SO ₂)	1.8033	0.1175	1.5853	0.1195	-0.6889	-0.1149
	(1.2382)	(0.1257)	(1.2658)	(0.1268)	(0.7493)	(0.0854)
Ozone (O ₃)	1.0381	0.1307	0.9698	0.1292	0.4209	0.0150
	(1.1260)	(0.1109)	(1.1562)	(0.1157)	(0.6342)	(0.0749)
Week FE	X	X	X	X		
Year FE						
Month of the year * Municipality FE					X	X
Municipality FE	X	X	X	X	X	X
Weather Controls	X	X	X	X	X	X
Municipality Week Trends			X	X	X	X

Notes: Here, we explore the robustness of the fixed effects estimates, reported in Columns (1) and (2) of Table 4, to different sets of control variables. Each coefficient corresponds to a separate regression. Columns (1) and (2) drop the municipality specific week trends from the set of controls. Columns (3) and (4) drop the controls for maximum and minimum temperature. Columns (5) and (6) seek to replicate the set of controls used in Currie and Neidell's (2005) study by dropping week fixed effects and controlling for seasonality by including month of the year \times municipality dummies. Statistical significance is denoted by: *** $p < 0.01$, ** $p < 0.05$, * $p < 0.10$.

Appendix Table 3B: Alternative Control Variables in the Instrumental Variables Model

	<i>No Municipality Trends</i>		<i>No Min/Max Temp</i>		<i>Flexible Time Trend</i>	
	Neonatal	Infant	Neonatal	Infant	Neonatal	Infant
	(1)	(2)	(3)	(4)	(5)	(6)
Particulate Matter 24hr (PM ₁₀)	0.4133 (0.7853)	0.1481 (0.0917)	0.5123 (0.8123)	0.2578** (0.1050)	0.5640 (1.0651)	0.2822** (0.1426)
Carbon Monoxide 8hr avg. (CO)	0.0081 (0.0125)	0.0024* (0.0013)	0.0083 (0.0123)	0.0039*** (0.0013)	0.0071 (0.0139)	0.0036** (0.0015)
Instrument: Inversions	X	X	X	X	X	X
Week FE						
Year FE	X	X	X	X	X	X
Municipality FE	X	X	X	X	X	X
Weather Controls	X	X	X	X	X	X
Municipality Week Trends			X	X	X	X

Notes: In this table we explore the robustness of the IV estimates, reported in Columns (3) and (4) of Table 4, to different sets of control variables. Each coefficient corresponds to a separate regression. Columns (1) and (2) drop the municipality specific week trends from the set of controls. Columns (3) and (4) drop the controls for maximum and minimum temperature. Columns (5) and (6) introduce a quadratic overall time trend in addition to the municipality-level linear time trends. Statistical significance is denoted by: *** p<0.01, ** p<0.05, * p<0.10. Statistical significance is denoted by: *** p<0.01, ** p<0.05, * p<0.10.

Appendix Table 4A: First Stage at Month Level

	PM ₁₀ 24 hr avg (1)	CO 8 hr avg (2)
Number of Thermal Inversions per Month	0.337 (0.221)	31.905*** (5.665)
Kleibergen and Paap rk statistic	2.138	27.19
Stock-Yogo Critical Value 10% maximal IV size	16.38	16.38

Notes: This table presents the estimates of the effect of the number of thermal inversions per month on average PM₁₀ concentration (Column 1) and CO concentration (Column 2) at the month level. These regressions control for year fixed effects, municipality fixed effects, municipality level month trends, a fourth degree polynomial in mean temperature, a third degree polynomial in minimum and maximum temperatures during the month, a second degree polynomial in precipitation, humidity and cloud cover measures. Standard errors are clustered at the month level. The bottom two rows provides the Kleibergen-Paap rk statistic for weak instruments and the Stock-Yogo critical value at the 10% level. The first stage for PM₁₀ does not pass the weak instruments test. However, the Kleibergen-Paap rk test is above the critical value for the CO specification.

Appendix Table 4B: IV Estimation at the Month Level

	Neonatal (1)	Infant (2)
Particulate Matter 24hr avg (PM ₁₀)	10.7805 (8.0766)	2.6912 (1.7277)
Carbon Monoxide 8hr avg (CO)	0.1738* (0.0979)	0.0376*** (0.0146)
Observations	5634	5634
Mean Mortality Rate	1187.32	164.00
Instrument: Inversions	X	X
Year FE	X	X
Municipality FE	X	X
Weather Controls	X	X
Municipality Month Trends	X	X

Notes: In this table, we explore whether there is harvesting by estimating our main results at the month level instead of at the week level. Each coefficient and corresponding standard error is the result of a separate regression. Here, the dependent variable is infant morality rates at the month level calculated as the number of deaths in the month divided by the total number of births in the same month. Controls are the same as in the First Stage specification and the excluded instrument is number of inversions in the corresponding month. Because we collapse our data at the month level, the number of observations drops to 5634. We also provide the mean mortality rate at the month level, which corresponds to the number of deaths in each age category (younger than 28 days or younger than 1 year) divided by the number of births corresponding to that cohort. Standard errors (listed below each estimate in parenthesis) are clustered at the week level. Statistical significance is denoted by: *** p<0.01, ** p<0.05, * p<0.10.

Appendix Table 5: Specification Checks

	<i>Logs</i>		<i>Not Dropping Outliers</i>	
	Neonatal (1)	Infant (2)	Neonatal (3)	Infant (4)
Particulate Matter (PM ₁₀)	0.00026 (0.00246)	0.00384* (0.00232)	0.4504 (0.9466)	0.2408** (0.1197)
Carbon Monoxide (CO)	0.00000 (0.00003)	0.00005* (0.00003)	0.0060 (0.0121)	0.0031** (0.0013)
Mean of Outcome Variable	0.98	0.73	295.83	38.21
Instrument: Inversions	X	X	X	X
Week Fixed Effects				
Year Fixed Effects	X	X	X	X
Municipality Fixed Effects	X	X	X	X
Weather Controls	X	X	X	X
Municipality Week Trends	X	X	X	X

Notes: In this table, we investigate the robustness of our results to alternative model specifications. We estimate the model in logs rather than levels, and explore whether the results change if we do not drop outliers. Each coefficient is the result of a separate regression. Standard errors (listed below each estimate in parenthesis) are clustered at the week level. Statistical significance is denoted by: *** p<0.01, ** p<0.05, * p<0.10.

Appendix Table 6A: Are the Results Driven By Seasonality? (IV Estimation)

	Mortality in Guadalajara as Control		Seasons FE		Seasons + Year FE	
	Neonatal	Infant	Neonatal	Infant	Neonatal	Infant
	(1)	(2)	(3)	(4)	(5)	(6)
Particulate Matter 24 hr avg (PM ₁₀)	0.3429 (0.9236)	0.2156* (0.1167)	0.7157 (0.7549)	0.2247** (0.0988)	0.3489 (1.4495)	0.2351 (0.1839)
Carbon Monoxide 8hr avg (CO)	0.0056 (0.0129)	0.0030** (0.0014)	0.0151 (0.0163)	0.0047** (0.0019)	0.0044 (0.0165)	0.0027 (0.0017)
Mean of Outcome Variable	295.83	38.21	295.83	38.21	295.83	38.21
Week Fixed Effect						
Year Fixed Effect	X	X	X	X	X	X
Municipality Fixed Effect	X	X	X	X	X	X
Weather Controls	X	X	X	X	X	X
Municipality Specific Week Trends	X	X	X	X	X	X

Notes: In this table, we investigate whether our results are driven by seasonality in mortality that is independent of thermal inversions and pollution. We are already controlling for a wide array of temperature and weather variables in our main regressions, and so this table tests the sensitivity of the results to seasonality above and beyond weather patterns. If seasonality in mortality is driving our results, we would expect these to be sensitive to adding seasonality controls in addition to the weather and temperature variables. Each coefficient is the result of a separate regression. Columns (1) and (2) show our IV results when the infant mortality rate in Guadalajara as added as a control. Columns (3) and (4) show our IV results when we include season indicators (summer, fall and spring) as controls instead of year fixed effects. Columns (5) and (6) show our results when we control seasons and year fixed effects in the same specification. Standard errors (listed below each estimate in parenthesis) are clustered at the week level. Statistical significance is denoted by: *** p<0.01, ** p<0.05, * p<0.10.

Appendix Table 6B: Effect of Pollution, By Season

	Neonatal (1)	Infant (2)	Neonatal (3)	Infant (4)
<i>Panel A: Heterogeneity of PM₁₀ effect by winter/summer weeks</i>				
PM ₁₀ 24hr avg	0.5100 (1.1621)	0.2667* (0.1473)	0.2272 (1.0657)	0.2151* (0.1293)
Summer Definition 1 * PM ₁₀	0.0556 (0.2732)	0.0287 (0.0370)		
Summer Definition 2 * PM ₁₀			-0.2628 (0.2809)	-0.0234 (0.0310)
Angrist-Pischke F-statistic, First Stage 1	13.63	13.1	14.61	14.16
Angrist-Pischke F-statistic, First Stage 2	66.72	65.02	95.7	94.87
Stock-Yogo Critical Values for Single Endog. Regress	16.38	16.38	16.38	16.38
<i>Panel B: Heterogeneity of CO effect by winter/summer weeks</i>				
CO 8hr avg	0.0062 (0.0130)	0.0030** (0.0014)	0.0057 (0.0132)	0.0030** (0.0014)
Summer Definition 1 * CO	-0.0018 (0.0040)	-0.0005 (0.0005)		
Summer Definition 2 * CO			-0.0074 (0.0049)	-0.0012** (0.0005)
Angrist-Pischke F-statistic, First Stage 1	114.9	113.21	123.32	122.04
Angrist-Pischke F-statistic, First Stage 2	208.28	207.6	146.14	148.65
Stock-Yogo Critical Values for Single Endog. Regress	16.38	16.38	16.38	16.38
Instrument: Inversions, Inversions * Summer Definitio	X	X		
Instrument: Inversions, Inversions * Summer Definition 2			X	X
Year FE	X	X	X	X
Municipality FE	X	X	X	X
Weather Controls	X	X	X	X
Municipality Specific Week Trends	X	X	X	X

Notes: In this table, we investigate whether the estimates differ by seasons. Although most thermal inversions occur in the winter months scattered thermal inversions the rest of the year allow us to test for whether our results hold outside of the winter season. We define "summer weeks" in two different ways: from the 14th to the 43rd week of the year (Summer Definition 1) and from the 13th to the 42nd week of the year (Summer Definition 2). These weeks correspond roughly to the weeks of the year where temperature increases substantially compared to the winter weeks. To test for whether our results differ between cold and warm months, we include the interaction between pollution with the summer weeks indicator as a right hand side variable. Our set of instruments consists of the uninteracted number of thermal inversions per week and the interaction between the summer weeks indicator and the number of thermal inversions. Each column within each panel corresponds to a separate regression. We report the Angrist-Pischke F-statistic to assess the strength of each of the two first stage equations in the model. To rule out more than 10% bias due to weak instruments, these statistics should be above the Stock-Yogo critical value for a single endogenous regressor reported below them. Controls are the same as in Columns (3) and (4) of Table 4. Standard errors (listed below each estimate in parenthesis) are clustered at the week level. Statistical significance is denoted by: *** p<0.01, ** p<0.05, * p<0.10.

Appendix Table 7: First Stage For Multivariate Model

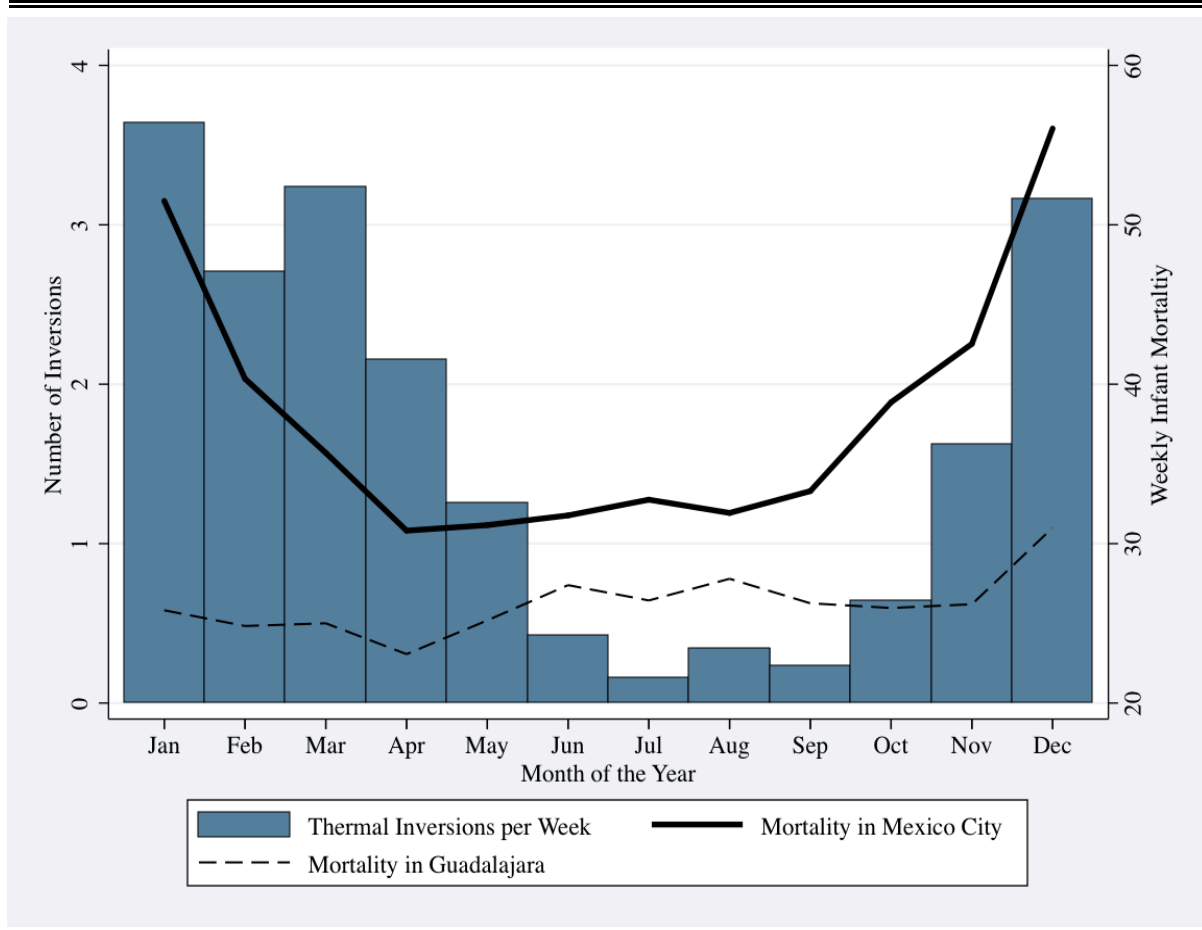
	PM ₁₀ 24hr avg (1)	CO 8hr avg (2)
Inversions	13.7335*** (1.8382)	116.1699*** (39.7789)
Inversions * Altitude	-0.0056*** (0.0009)	0.00167 (0.0199)
Thickness * Altitude	0.000013 (0.000008)	0.0004* (0.0002)
Angrist-Pischke F-statistic	24.36	50.24
Stock Yogo weak ID critical value for single endogenous regressor	8.68	8.68
Cragg-Donald Wald F-statistic		33.15
Stock-Yogo weak ID test for 2 instruments and 2 endogenous regressors		5.44

Notes: This table presents the results of first stage equations for Table 6, Panel A (see notes on Table 6). We report the Angrist-Pische F-statistic to assess the strength of each of the two first stage equations in the model. To rule out more than 10% bias due to weak instruments, these statistics should be above the Stock-Yogo critical value for a single endogenous regressor reported below them. In addition, we report the Cragg-Donald Wald F-statistic which offers a way to test for weak instruments in all first stage equations simultaneously when compared to the Stock-Yogo critical value for 2 endogenous regressors.

Appendix Table 8: Comparison with Literature in United States Setting (Multiple Regression Results)

	Infant Mortality Rate (1)	CO			Particulate Matter		
		Mean Level (2)	Effect Size (Year) (3)	Elasticity (4)	Mean Level (5)	Effect Size (Year) (6)	Elasticity (7)
<i>Panel A: Mexico City Data</i>							
Infant Mortality	1986.82	2.70756	124.8	0.170	66.94	3.6192	0.120
<i>Panel B: Estimates from United States Setting</i>							
Currie and Neidell (2005)	391	1.998	18.125**	0.093	39.448	-0.226	-0.024
Knittel, Miller, and Sanders (201	280	1.01	80.6	0.291	28.94	18.2***	1.881

Notes: This table replicates Table 8 but uses the estimates from the multiple regression model rather than the single regression models.

Appendix Figure 1: Comparing Mexico City and Guadalajara

Notes: This figure compares the average number of inversions per week (bars) against the infant mortality rate in Mexico City (bold line) and the infant mortality rate in Guadalajara (dashed line) for each month of the year. Guadalajara's infant mortality rate appears to be lower and nearly constant across the different months of the year, while Mexico's City infant mortality appears to have strong seasonal patterns that coincide with thermal inversion patterns. Thermal inversions are absent in Guadalajara.